



BOSTON PUBLIC HEALTH COMMISSION (BPHC)

Communicable Disease Control Division
 1010 Massachusetts Ave - Boston, MA 02118
 Phone: (617) 534-5611 - Fax: (617) 534-5905

Influenza Report - For the week ending 12/3/2016

10/1/2016 -12/3/2016

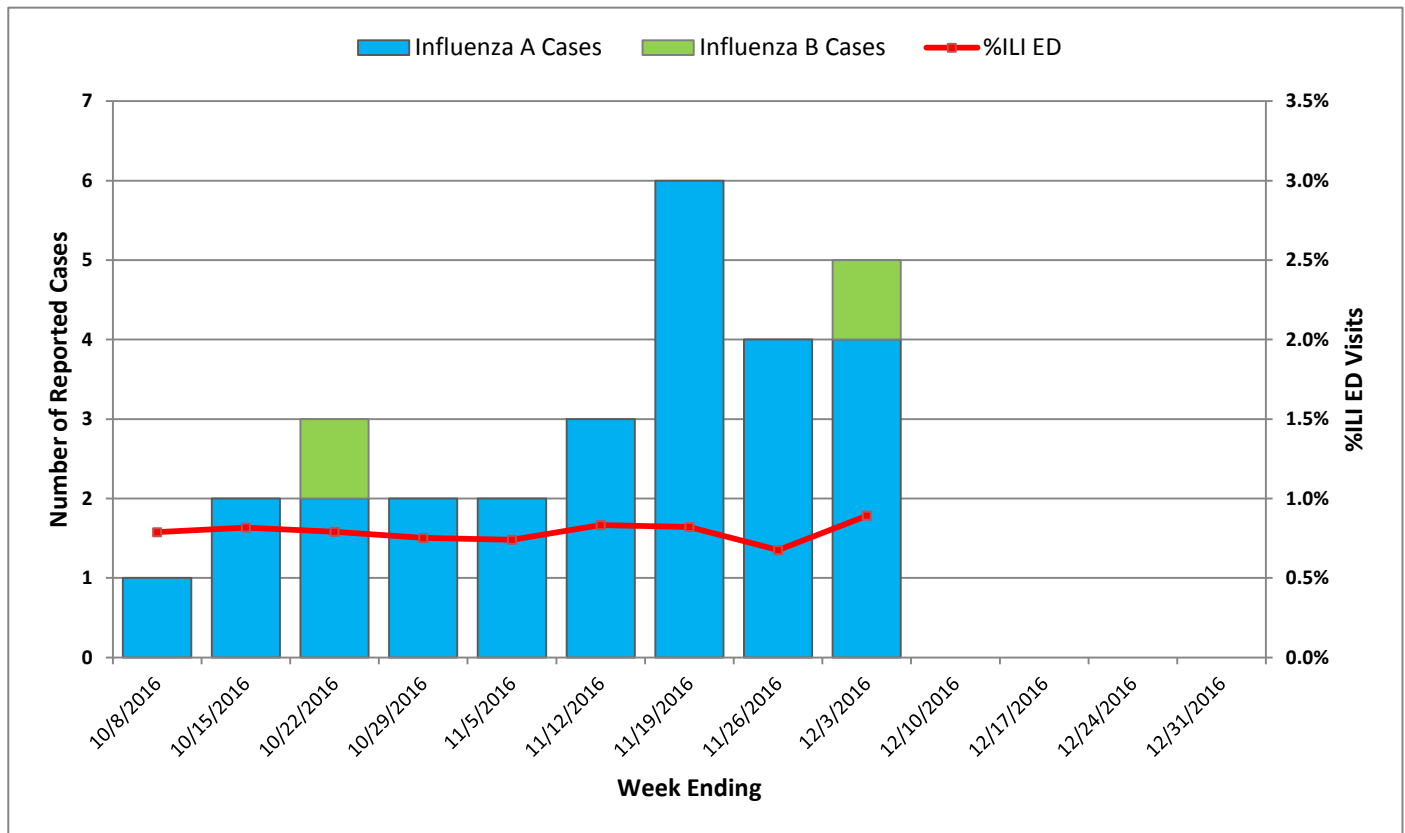
Reported Cases (Boston Res.)	#
Influenza A	26
Influenza B	2
Influenza A and B	0
Total	28

ED Surveillance	
This Week % ILI	0.89%
Average % ILI (since 10/1/2016)	0.79%

Summary: As of 12/3/2016, 28 cases of laboratory-confirmed influenza were reported to the Boston Public Health Commission (BPHC) since 10/1/2016, with ten (36%) cases requiring hospitalization. No influenza-associated deaths have been reported. Emergency department visits for influenza-like illness (ILI) comprised 0.89% of all ED visits this week.

Cases of influenza diagnosed in Boston and confirmed by any laboratory test must be reported to BPHC by calling (617) 534-5611 or faxing reports to (617) 534-5905.

Weekly Reported Influenza Cases and % ILI ED Visits, 2016-17 Season

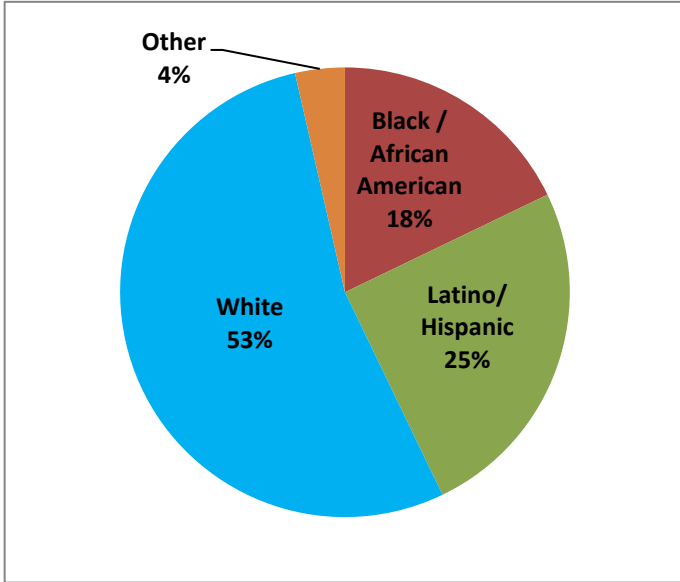




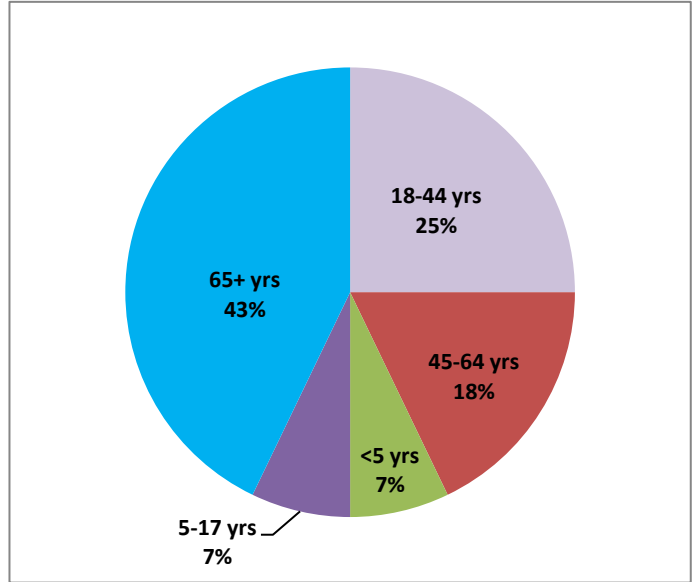
BOSTON PUBLIC HEALTH COMMISSION (BPHC)

Communicable Disease Control Division
 1010 Massachusetts Ave - Boston, MA 02118
 Phone: (617) 534-5611 - Fax: (617) 534-5905

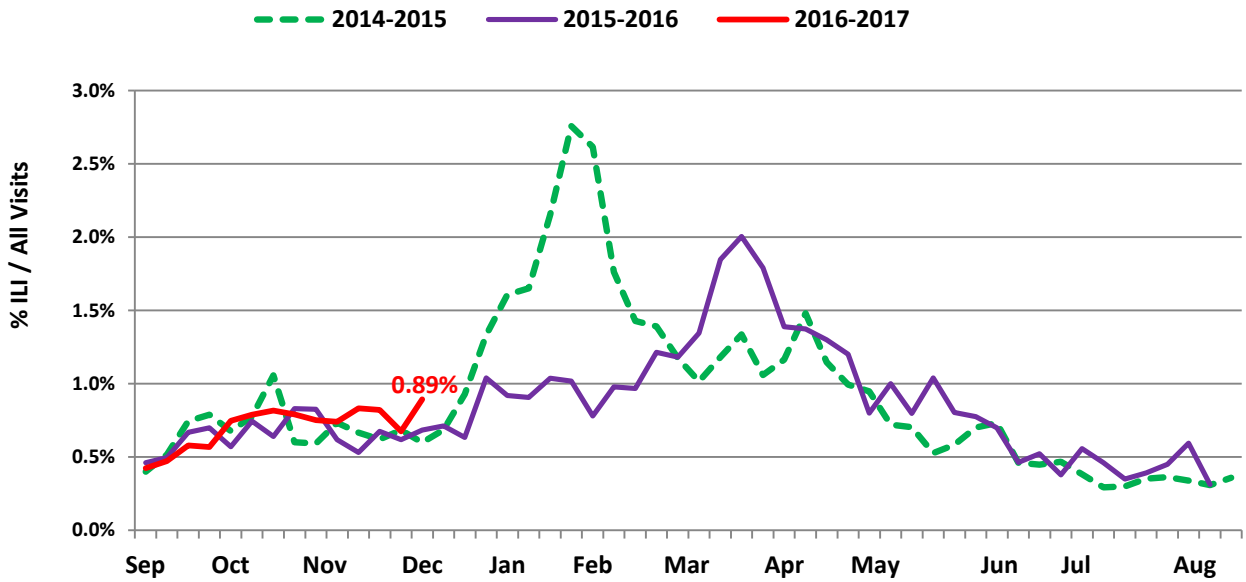
Race/Ethnicity of Confirmed Influenza Cases, 10/1/2016 - 12/3/2016, Boston Residents



Age Distribution of Confirmed Influenza Cases, 10/1/2016 - 12/3/2016, Boston Residents



Weekly % ILI ED Visits, 2013-2016



Influenza-like illness (ILI) is defined as "flu" OR "fever and a cough or sore throat" in the ED chief complaint as captured by the BPHC Syndromic Surveillance System.

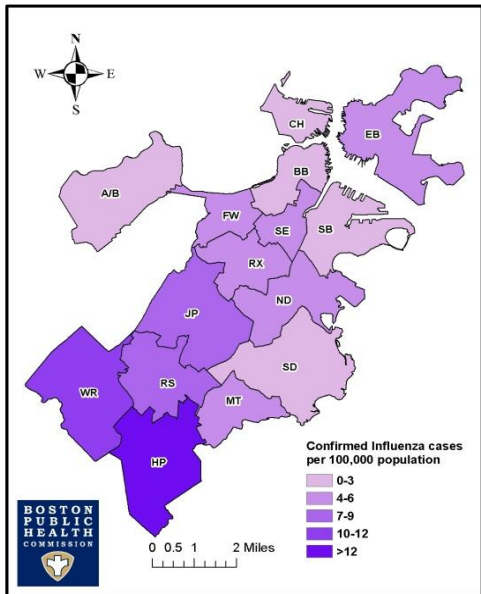


BOSTON PUBLIC HEALTH COMMISSION (BPHC)

Communicable Disease Control Division
 1010 Massachusetts Ave - Boston, MA 02118
 Phone: (617) 534-5611 - Fax: (617) 534-5905

Geographic Distribution

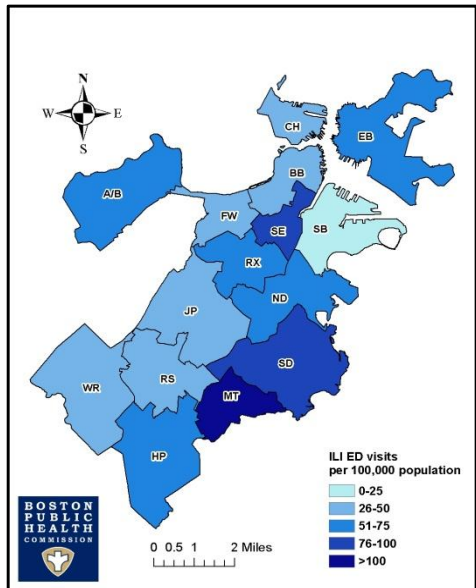
Rate of Confirmed Influenza Cases by Neighborhood per 100,000 Population
 October 1, 2016 - December 3, 2016



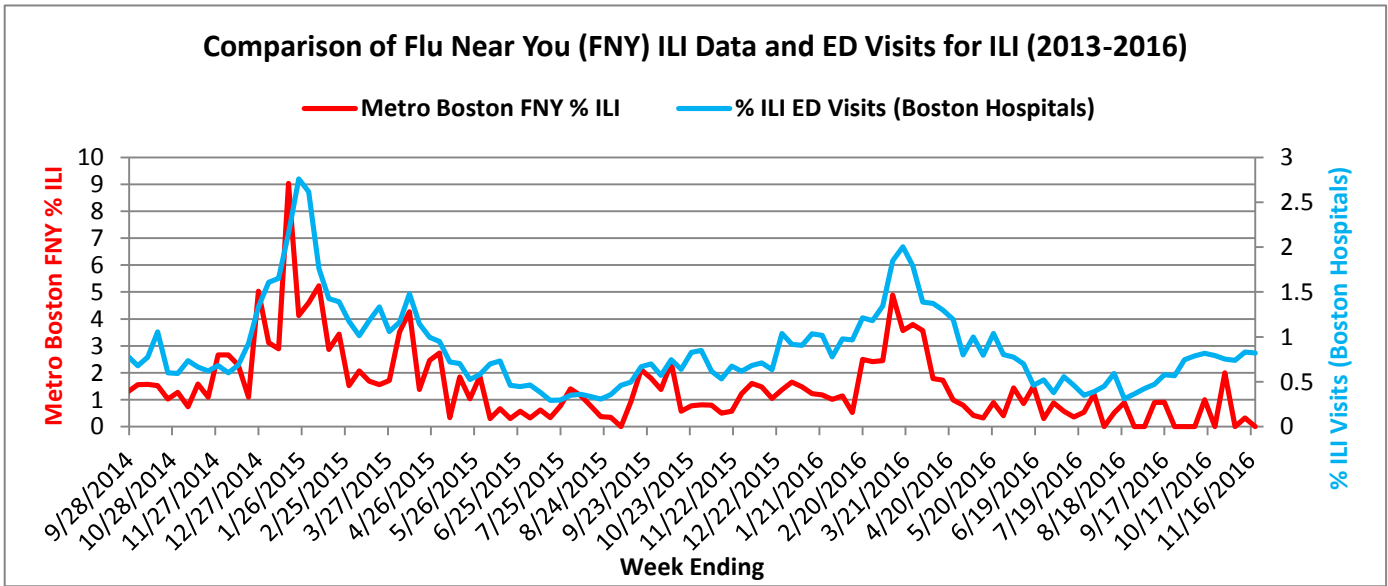
Neighborhood Legend

- A/B=Allston/Brighton
- BB=Back Bay
- CH=Charlestown
- EB=East Boston
- FW=Fenway
- HP=Hyde Park
- JP=Jamaica Plain
- MT=Mattapan
- ND=North Dorchester
- RS=Roslindale
- RX=Roxbury
- SB=South Boston
- SD=South Dorchester
- SE=South End
- WR=West Roxbury

Rate of ILI Syndrome ED Visits by Neighborhood per 100,000 Population
 October 1, 2016 - December 3, 2016



Comparison of ILI Using Flu Near You (FNY)* Ill Data and ED Visits for ILI, 2013-2016



*Flu Near You (FNY) compiles weekly data of ILI activity in the United States. The data come from short, weekly internet-based surveys completed by voluntary participants who indicate whether they are healthy or have experienced any of a short list of symptoms.

The public may participate by enrolling in FNY at: <https://flunearyou.org/>