



# BOSTON PUBLIC HEALTH COMMISSION (BPHC)

Communicable Disease Control Division  
1010 Massachusetts Ave - Boston, MA 02118  
Phone: (617) 534-5611 - Fax: (617) 534-5905

## Influenza Report - For the week ending 2/10/2018

### 10/1/2017 -2/10/2018 (Week 6)

Reported Cases (Boston Residents)	# (% of total)
Influenza A	1733 (82%)
Influenza B	376 (18%)
Influenza A and B	3
Influenza (type unspecified)	0
<b>TOTAL (season-to-date)</b>	<b>2112</b>

Boston ED ILI Surveillance*	
This Week ILI%	5.13%
Last Week ILI%	5.23%
Average ILI% (since 10/1/2017)	1.73%
State/National ILI Surveillance**	
This Week Massachusetts ILI%	5.55%
This Week National ILI%	7.51%

**Summary:** As of 2/10/2018, 2,112 cases of laboratory-confirmed influenza among Boston residents have been reported to Boston Public Health Commission (BPHC); 379 (18%) have required hospitalization [down 2% from week prior]. Five influenza-associated deaths have been reported; all deaths occurred in persons of advanced age or with multiple underlying medical conditions. Emergency Department visits for influenza-like illness (ILI) comprised 5.13% of all ED visits this week [down 0.10% from week prior].

Boston City data may not parallel aggregate statewide data as other geographic regions of Massachusetts are experiencing different levels of influenza activity.

**Providers should continue to offer vaccine to all persons ≥6 months of age through the remainder of the season. Vaccination is the best way to prevent influenza and its complications.**

**Cases of influenza diagnosed in Boston and confirmed by any laboratory test must be reported to BPHC by calling (617) 534-5611 or faxing reports to (617) 534-5905.**

\*Influenza-like illness (ILI) is defined as "flu" OR "fever AND (cough OR sore throat)" in ED chief complaint captured by BPHC Syndromic Surveillance Sys.

\*\*Massachusetts and CDC use a different methodology than the City of Boston to calculate ILI%. State and National ILI data are calculated using ILInet outpatient surveillance data from sentinel sites (see: <https://www.cdc.gov/flu/weekly/overview.htm> for more information).

On December 27, 2017, a Health Advisory was released by CDC providing: 1) notice of increased influenza A(H3N2) activity and its clinical implications; 2) summary of influenza antiviral drug treatment recommendations; 3) update on approved antiviral medications and current supply; and 4) background information for patients about influenza treatment. For more information, go to: <https://emergency.cdc.gov/han/han00409.asp>

**Current as of February 3, 2017, among circulating wild-type influenza viruses tested, including influenza A(H3N2), no significant antigenic drift has been identified. The majority of A(H3N2) viruses tested were well-inhibited by reference virus representing the A(H3N2) component of the 2017-18 Northern Hemisphere influenza vaccines.**

While possible for individuals who have been vaccinated to get the flu (though NOT from the vaccine itself), studies have shown prior vaccination during the season can attenuate the severity of illness, reduce the risk of flu-associated hospitalization, and result in fewer flu-associated deaths particularly for children, pregnant women, and persons with chronic health conditions. Vaccination also protects persons around you, including those more vulnerable to serious flu illness.

**As of 2/7/18, CVS pharmacies reported limited supply of flu vaccine and had placed a repurchase order intended for the remainder of the season. Currently there are no shortages of vaccine at Walgreens or Rite Aid pharmacies. Providers are encouraged to continue offering vaccine to all eligible persons. There is currently no reported shortage of antiviral medication.**

**Providers should instruct patients to contact their local pharmacy to confirm availability of vaccine or antiviral medication prior to filling their prescription. Pharmacies out of stock will redirect callers to other locations where product is available.**

**Providers should inform patients that MassHealth will cover the cost of Tamiflu if the pharmacy is out of generic. Health Safety Net will cover cost of Tamiflu if generic is unavailable.**

**Patients may call the Mayor's Health Line, M-F, 9a-5p at 617-534-5050 or toll free at 1-800-847-6710.**

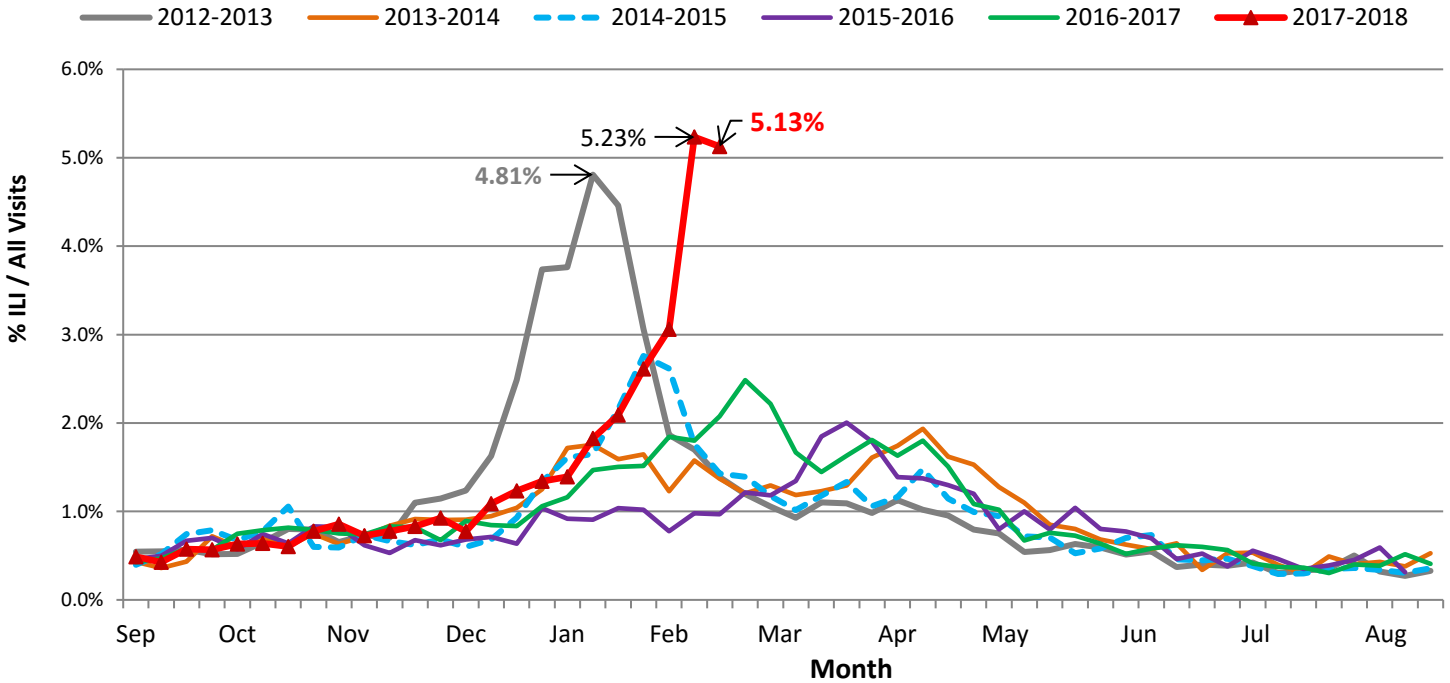


# BOSTON PUBLIC HEALTH COMMISSION (BPHC)

Communicable Disease Control Division  
 1010 Massachusetts Ave - Boston, MA 02118  
 Phone: (617) 534-5611 - Fax: (617) 534-5905

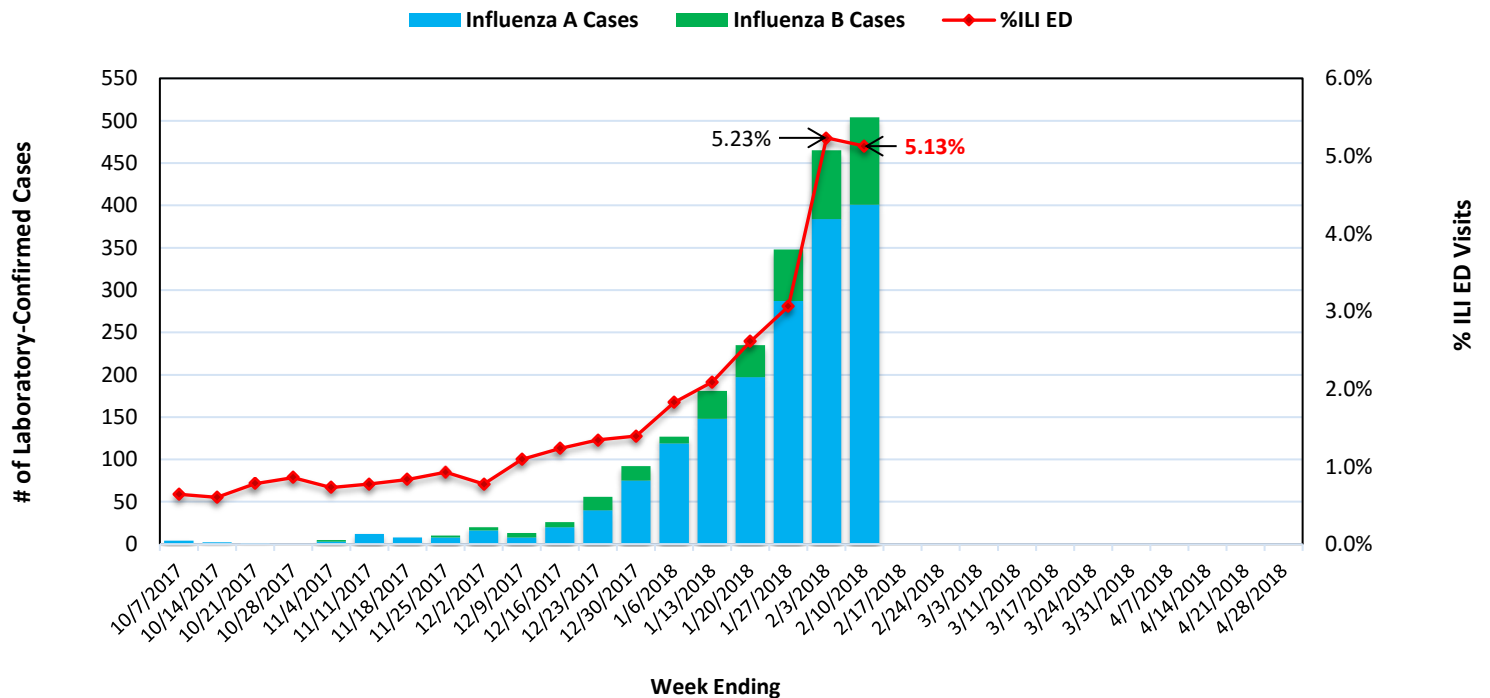
## Current Season and Historical Data

Weekly % ILI ED Visits, 2012-2018



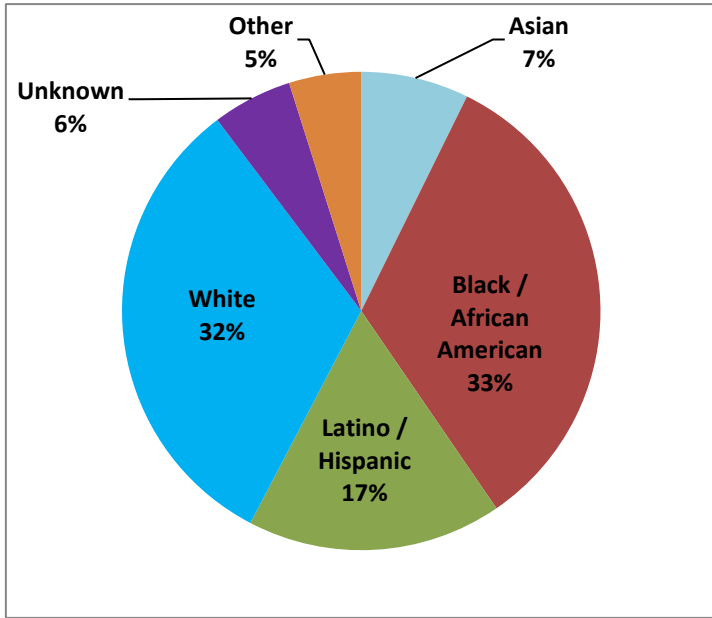
Weekly ILI ED visits are shown from 2012-2013 season to present. Influenza A H3N2, which has been the predominant influenza strain this season predominated in 2012-2013, 2014-2015 (with antigenic drift from the vaccine strain), and 2016-2017. The 2012-2013 season had a peak ILI of 4.81%. For the week ending 2/10/2018, ILI accounted for 5.13% of ED visits, a decrease of 0.10% from the previous week.

## Weekly Reported Influenza Cases (in Boston residents) and % ILI ED Visits, 2017-18 Season

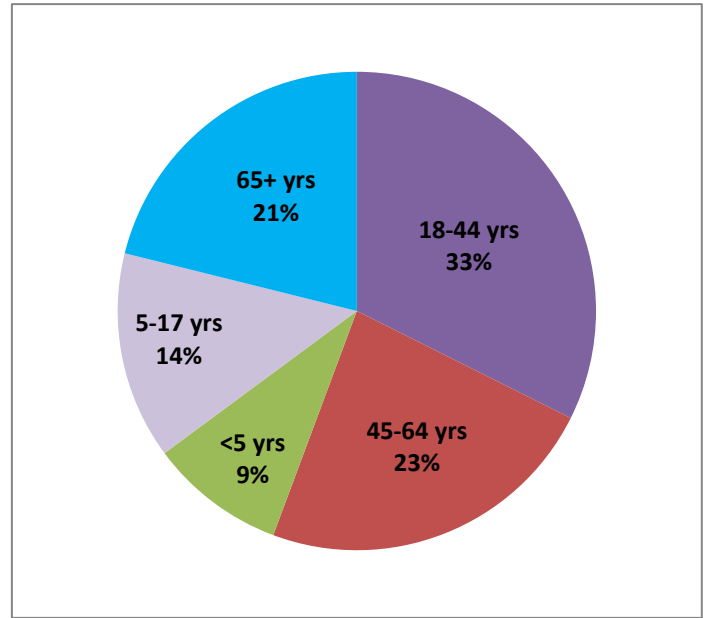


**Race/Ethnicity and Age Distribution**

**Race/Ethnicity of Confirmed Influenza Cases, 10/1/2017 - 2/10/2018, Boston Residents**

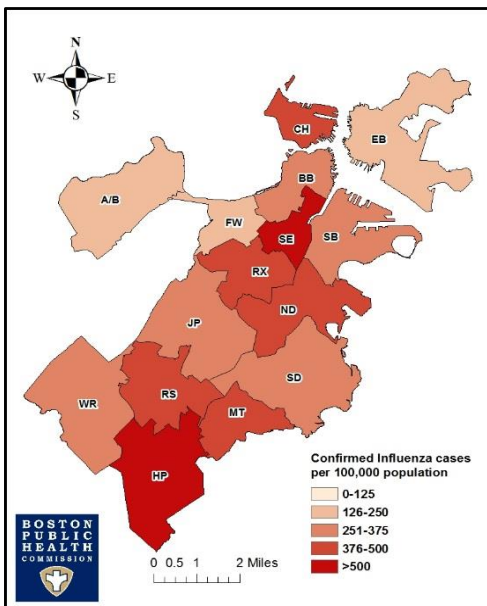


**Age Distribution of Confirmed Influenza Cases, 10/1/2017 - 2/10/2018, Boston Residents**



**Geographic Distribution**

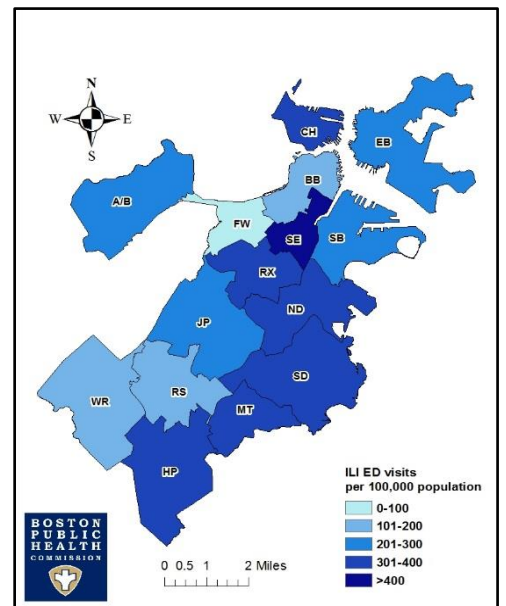
**Rate of Confirmed Influenza Cases by Neighborhood per 100,000 Population October 1, 2017 - February 10, 2018**



**Neighborhood Legend**

A/B=Allston/Brighton  
BB=Back Bay  
CH=Charlestown  
EB=East Boston  
FW=Fenway  
HP=Hyde Park  
JP=Jamaica Plain  
MT=Mattapan  
ND=North Dorchester  
RS=Roslindale  
RX=Roxbury  
SB=South Boston  
SD=South Dorchester  
SE=South End

**Rate of ILI Syndrome ED Visits by Neighborhood per 100,000 Population October 1, 2017 - February 10, 2018**

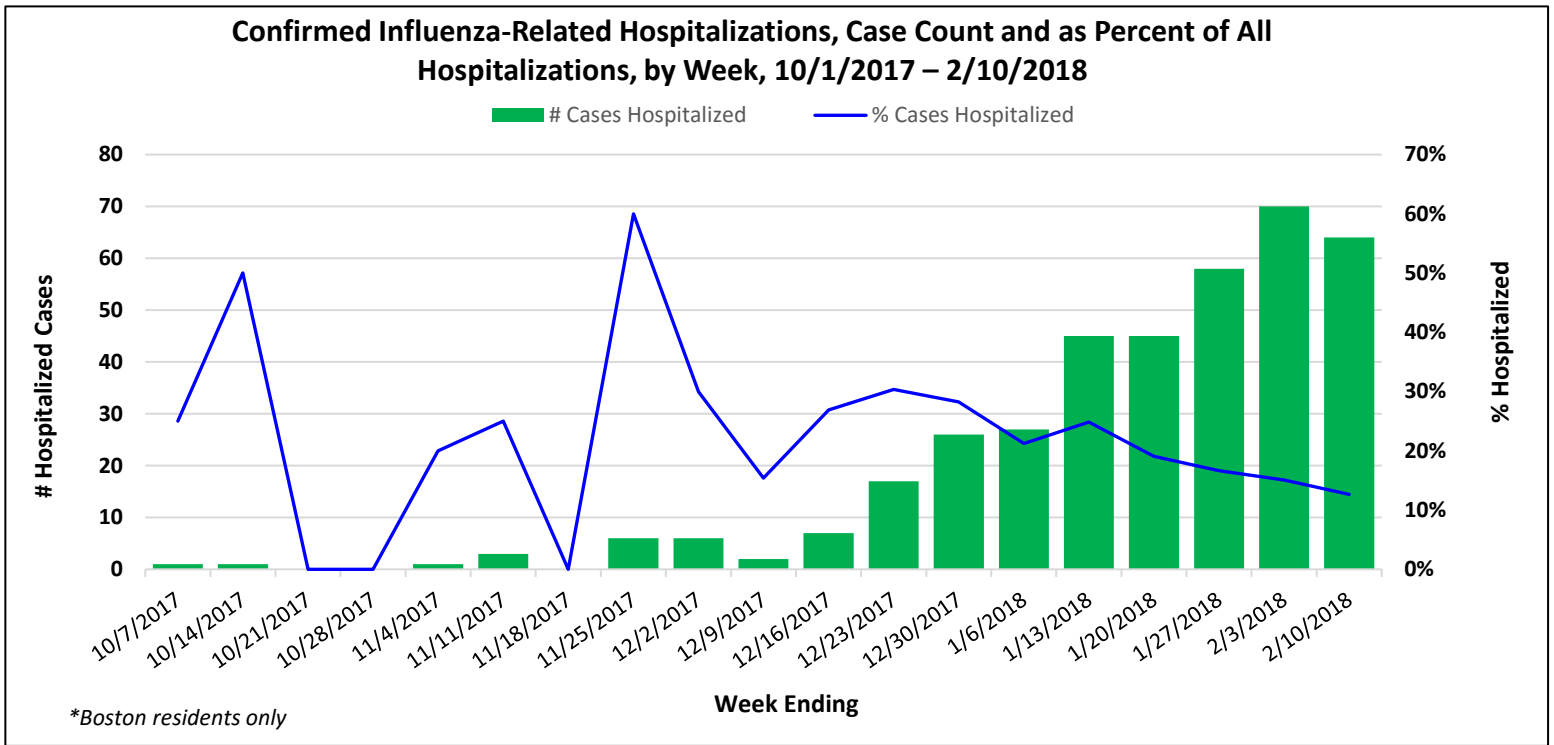




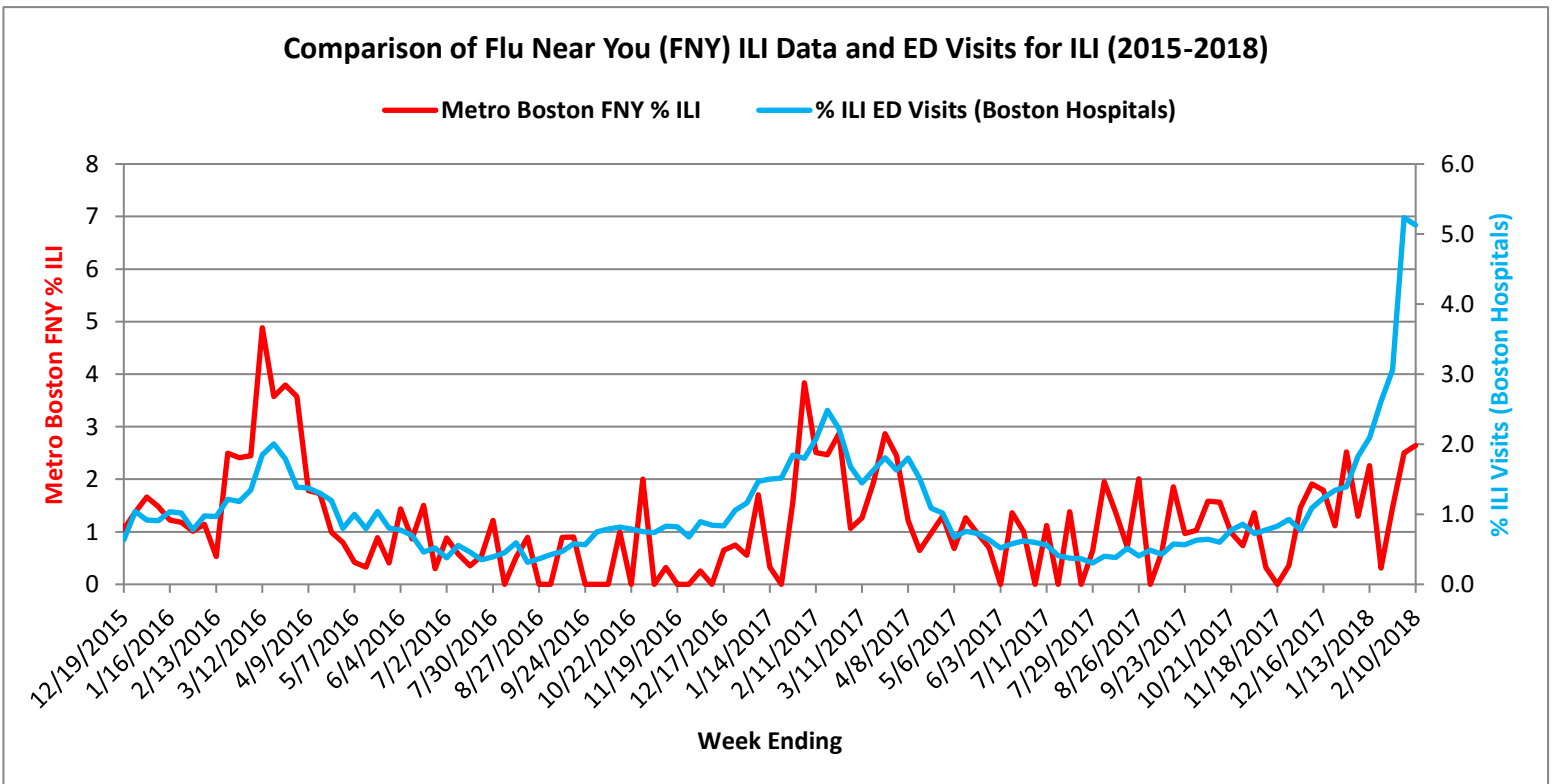
# BOSTON PUBLIC HEALTH COMMISSION (BPHC)

Communicable Disease Control Division  
1010 Massachusetts Ave - Boston, MA 02118  
Phone: (617) 534-5611 - Fax: (617) 534-5905

## Weekly Hospitalization Data on Laboratory-Confirmed Influenza in Boston Residents



## Comparison of ILI Using *Flu Near You (FNY)\** ILI Data and ED Visits for ILI, 2015-2018



\**Flu Near You (FNY)* compiles weekly data of ILI activity in the United States. The data come from short, weekly internet-based surveys completed by voluntary participants who indicate whether they are healthy or have experienced any of a short list of symptoms.

The public may participate by enrolling in FNY at: <https://flunearyou.org/>