



BOSTON PUBLIC HEALTH COMMISSION (BPHC)

Communicable Disease Control Division
1010 Massachusetts Ave - Boston, MA 02118
Phone: (617) 534-5611 - Fax: (617) 534-5905

Influenza Report - For the week ending 3/3/2018

10/1/2017 -3/3/2018 (Week 9)

Reported Cases (Boston Residents)	# (% of total)
Influenza A	2609 (78%)
Influenza B	719 (22%)
Influenza A and B	3
Influenza (type unspecified)	0
TOTAL (season-to-date)	3331

Boston ED ILI Surveillance*	
This Week ILI%	2.29%
Last Week ILI%	3.60%
State/National ILI Surveillance**	
This Week Massachusetts ILI%	3.03%
This Week National ILI%	3.74%

Summary: As of 3/3/2018, 3,331 cases of laboratory-confirmed influenza among Boston residents have been reported to Boston Public Health Commission (BPHC); 563 (17%) have required hospitalization [same as prior week]. Nine influenza-associated deaths have been reported; all deaths occurred in persons of advanced age or with multiple underlying medical conditions. Emergency Department visits for influenza-like illness (ILI) comprised 2.29% of all ED visits this week [down 1.31% from prior week].

Boston City data may not parallel aggregate statewide data as other geographic regions of Massachusetts are experiencing different levels of influenza activity.

Providers should continue to offer vaccine to all persons ≥6 months of age through the remainder of the season. Vaccination is the best way to prevent influenza and its complications.

Cases of influenza diagnosed in Boston and confirmed by any laboratory test must be reported to BPHC by calling (617) 534-5611 or faxing reports to (617) 534-5905.

*Influenza-like illness (ILI) is defined as "flu" OR "fever AND (cough OR sore throat)" in ED chief complaint captured by BPHC Syndromic Surveillance Sys.

**Massachusetts and CDC use a different methodology than the City of Boston to calculate ILI%. State and National ILI data are calculated using ILInet outpatient surveillance data from sentinel sites (see: <https://www.cdc.gov/flu/weekly/overview.htm> for more information).

On December 27, 2017, a Health Advisory was released by CDC providing: 1) notice of increased influenza A(H3N2) activity and its clinical implications; 2) summary of influenza antiviral drug treatment recommendations; 3) update on approved antiviral medications and current supply; and 4) background information for patients about influenza treatment. For more information, go to: <https://emergency.cdc.gov/han/han00409.asp>

As of February 3, 2018, among circulating wild-type influenza viruses tested, including influenza A(H3N2), no significant antigenic drift has been identified. The majority of A(H3N2) viruses tested were well-inhibited by reference virus representing the A(H3N2) component of the 2017-18 Northern Hemisphere influenza vaccines.

While possible for individuals who have been vaccinated to get the flu (though NOT from the vaccine itself), studies have shown prior vaccination during the season can attenuate the severity of illness, reduce the risk of flu-associated hospitalization, and result in fewer flu-associated deaths particularly for children, pregnant women, and persons with chronic health conditions. Vaccination also protects persons around you, including those more vulnerable to serious flu illness. **Influenza A(H1N1) and influenza B viruses currently represent a greater proportion of circulating viruses in the community compared with previous weeks. Influenza A(H1N1) and one (or two) influenza B strains are contained in this seasons vaccine and have demonstrated higher vaccine effectiveness rates of 67% and 42%, respectively. Providers should continue to offer vaccine to all persons ≥6 months of age through the remainder of the season. Vaccination is the best way to prevent influenza and its complications.**

As of February 7, 2018, CVS pharmacies reported limited supply of flu vaccine and had placed a repurchase order intended for the remainder of the season. Currently there are no shortages of vaccine at Walgreens or Rite Aid pharmacies. Providers are encouraged to continue offering vaccine to all eligible persons. There is currently no reported shortage of antiviral medication.

Providers should instruct patients to contact their local pharmacy to confirm availability of vaccine or antiviral medication prior to filling their prescription. Pharmacies out of stock will redirect callers to other locations where product is available.

Providers should inform patients that MassHealth will cover the cost of Tamiflu if the pharmacy is out of generic. Health Safety Net will cover cost of Tamiflu if generic is unavailable.

Patients may call the Mayor's Health Line, M-F, 9a-5p at 617-534-5050 or toll free at 1-800-847-6710.

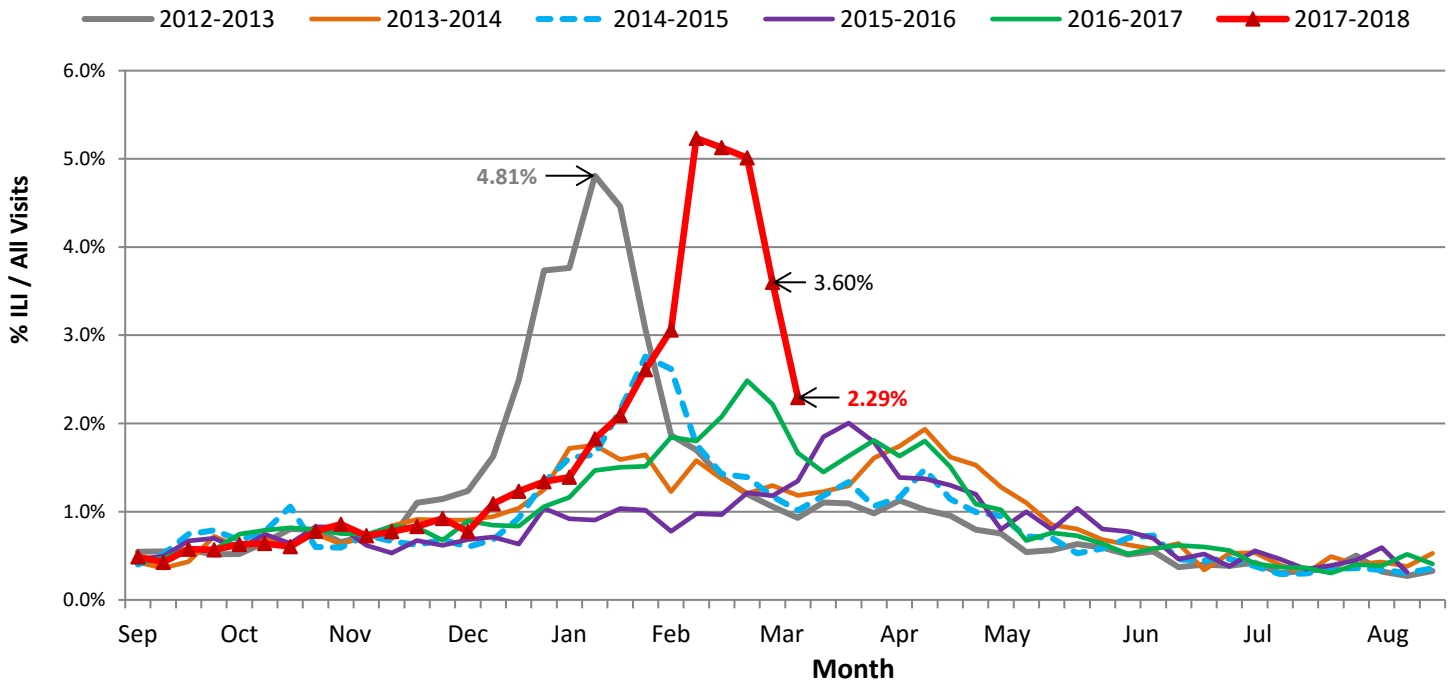


BOSTON PUBLIC HEALTH COMMISSION (BPHC)

Communicable Disease Control Division
1010 Massachusetts Ave - Boston, MA 02118
Phone: (617) 534-5611 - Fax: (617) 534-5905

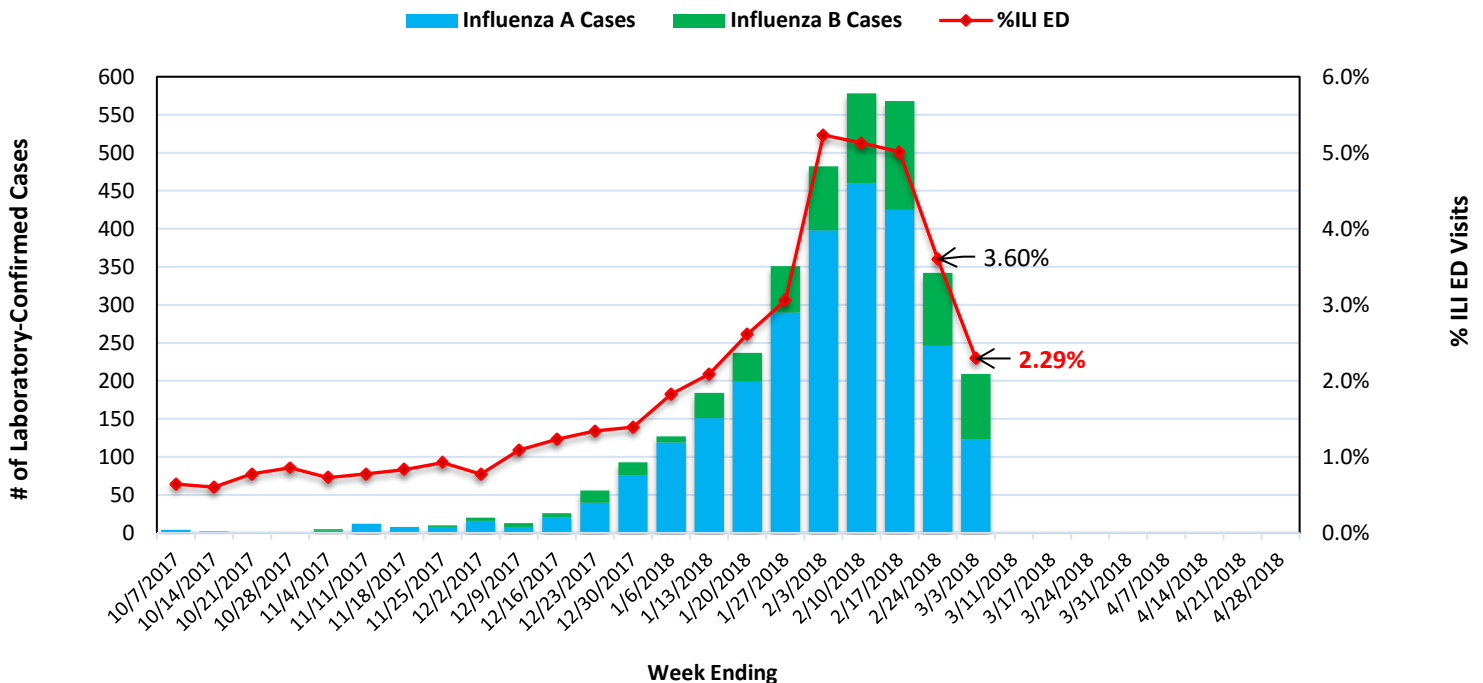
Current Season and Historical Data

Weekly % ILI ED Visits, 2012-2018



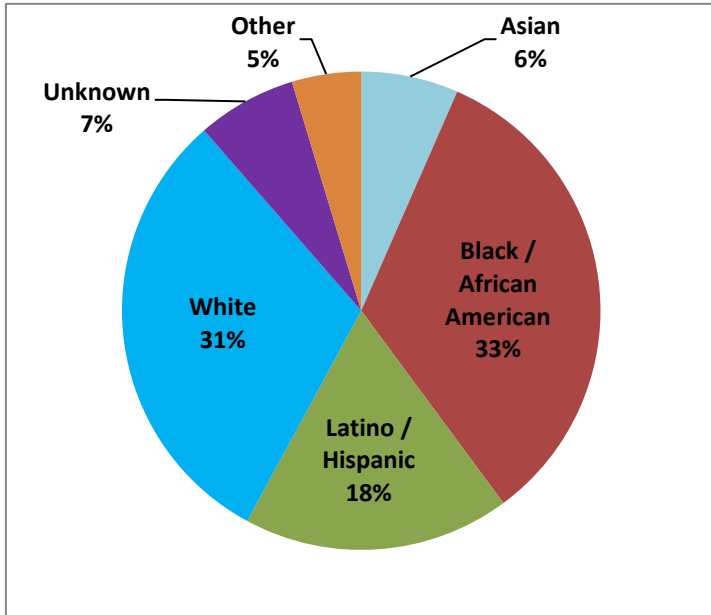
Weekly ILI ED visits are shown from 2012-2013 season to present. Influenza A H3N2, which has been the predominant influenza strain this season, predominated in 2012-2013, 2014-2015 (with antigenic drift from the vaccine strain), and 2016-2017. The 2012-2013 season had a peak ILI of 4.81%. For the week ending 3/2/2018, ILI accounted for 2.29% of ED visits, a decrease of 1.31% from the previous week.

Weekly Reported Influenza Cases (in Boston residents) and % ILI ED Visits, 2017-18 Season

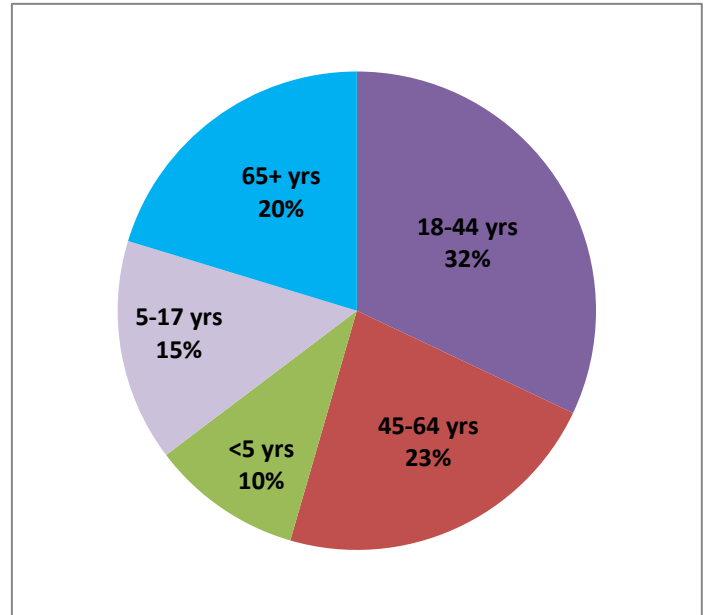


Race/Ethnicity and Age Distribution

**Race/Ethnicity of Confirmed Influenza Cases,
Boston Residents
October 1, 2017 - March 3, 2018**

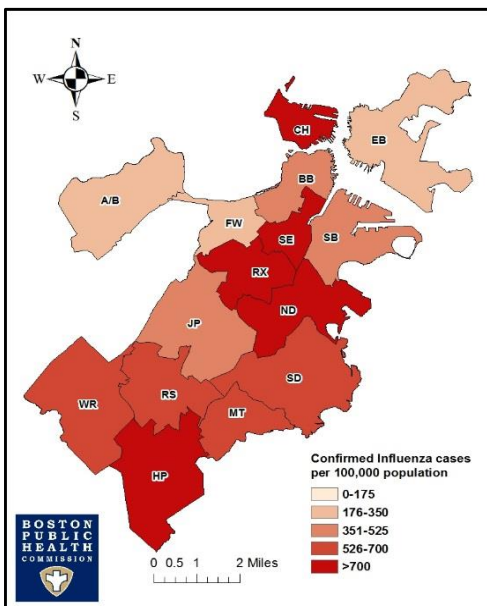


**Age Distribution of Confirmed Influenza Cases,
Boston Residents
October 1, 2017 - March 3, 2018**



Geographic Distribution

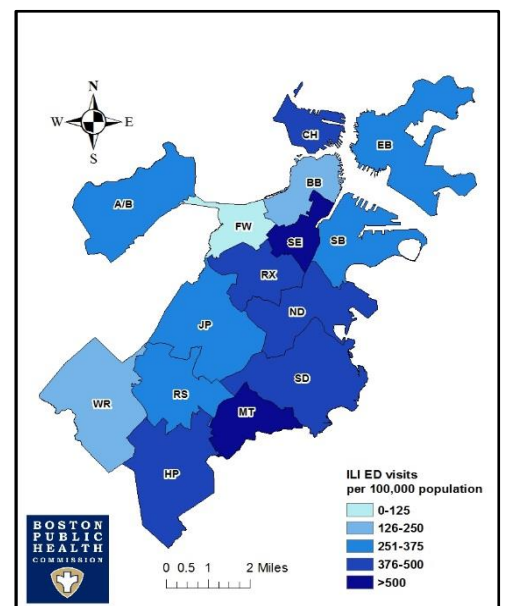
**Rate of Confirmed Influenza Cases
by Neighborhood per 100,000 Population
October 1, 2017 - March 3, 2018**



Neighborhood Legend

- A/B=Allston/Brighton
- BB=Back Bay
- CH=Charlestown
- EB=East Boston
- FW=Fenway
- HP=Hyde Park
- JP=Jamaica Plain
- MT=Mattapan
- ND=North Dorchester
- RS=Roslindale
- RX=Roxbury
- SB=South Boston
- SD=South Dorchester
- SE=South End

**Rate of ILI Syndrome ED Visits
by Neighborhood per 100,000 Population
October 1, 2017 - March 3, 2018**

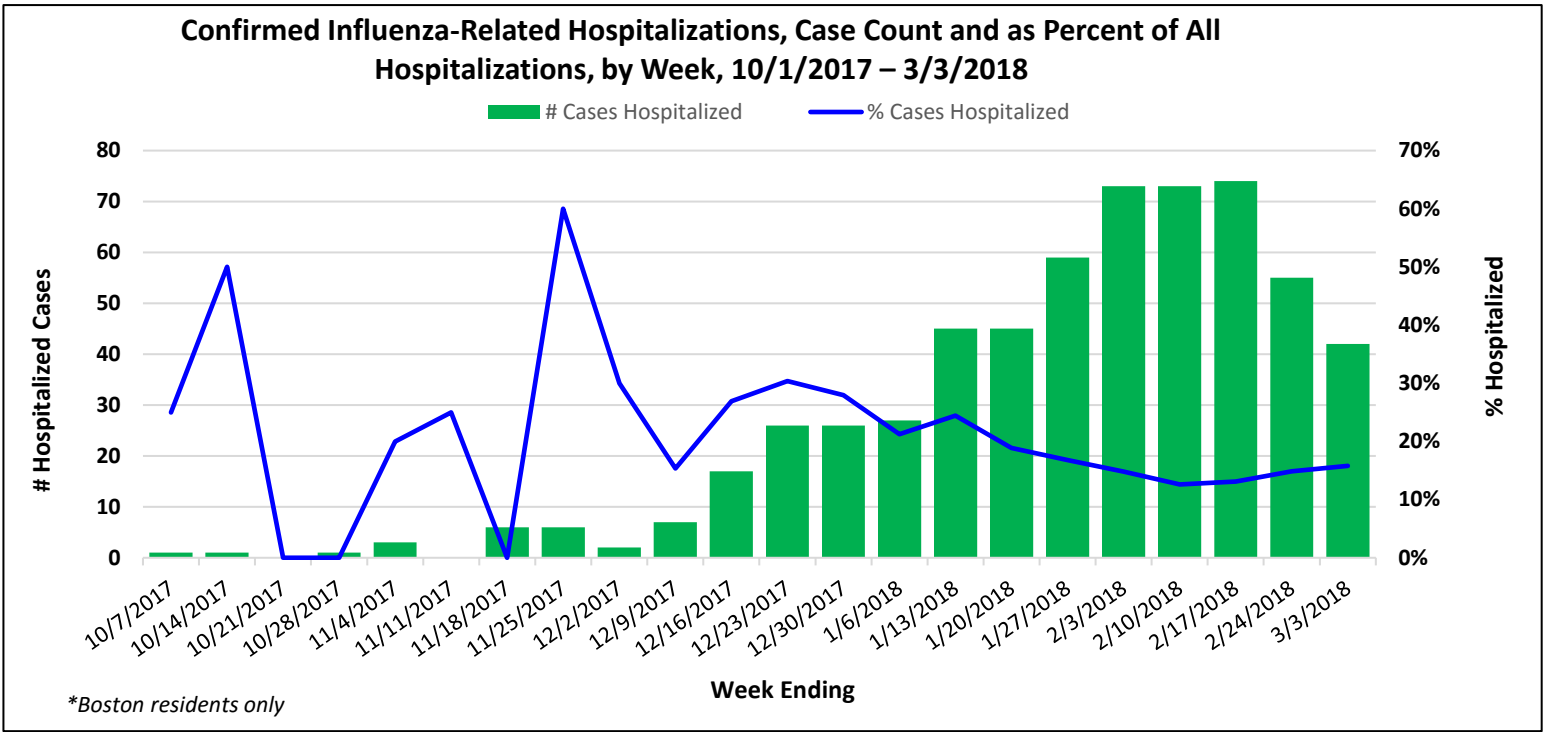




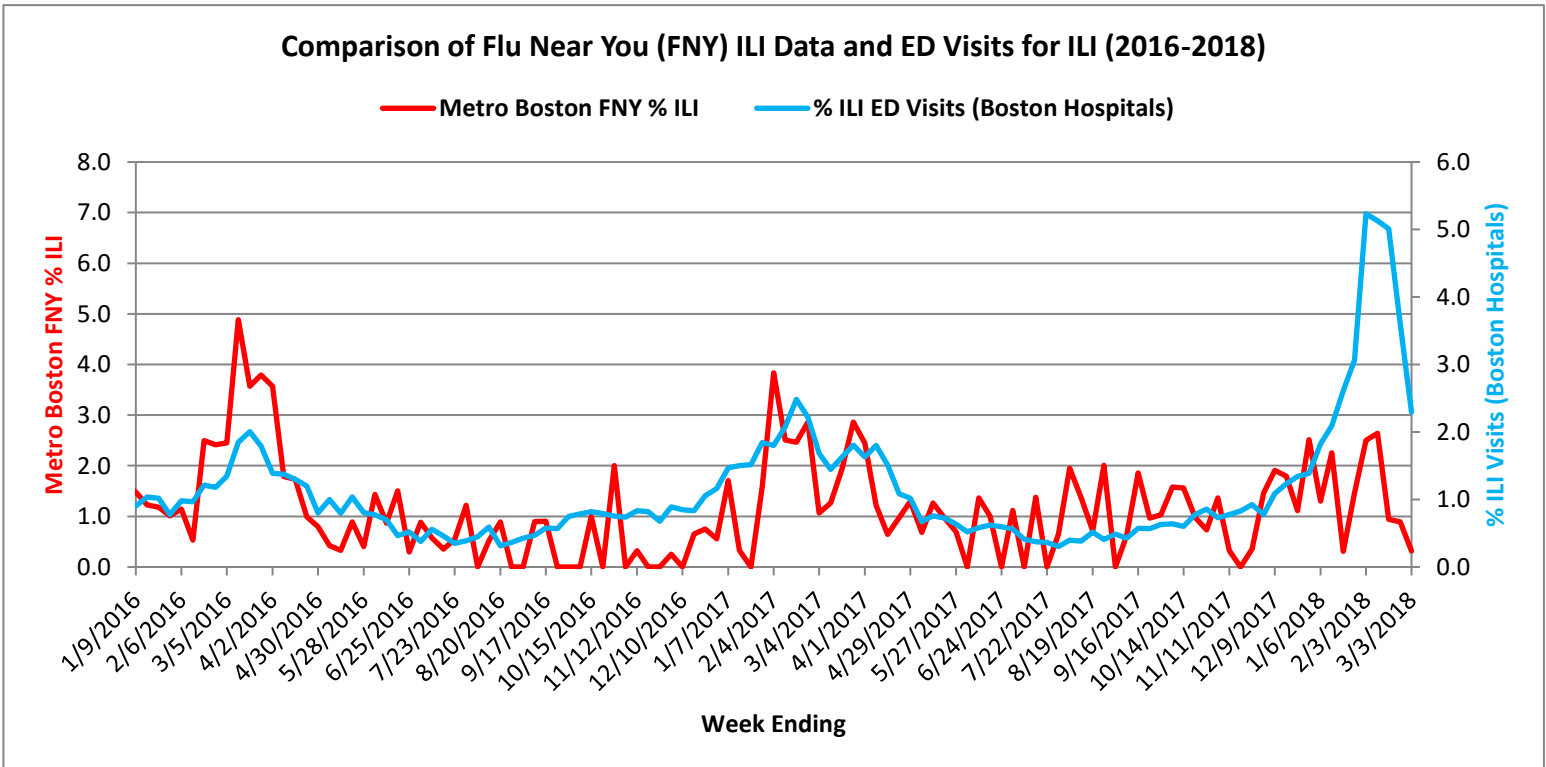
BOSTON PUBLIC HEALTH COMMISSION (BPHC)

Communicable Disease Control Division
1010 Massachusetts Ave - Boston, MA 02118
Phone: (617) 534-5611 - Fax: (617) 534-5905

Weekly Hospitalization Data on Laboratory-Confirmed Influenza in Boston Residents



Comparison of ILI Using *Flu Near You (FNY)** ILI Data and ED Visits for ILI, 2016-2018



**Flu Near You (FNY)* compiles weekly data of ILI activity in the United States. The data come from short, weekly internet-based surveys completed by voluntary participants who indicate whether they are healthy or have experienced any of a short list of symptoms.

The public may participate by enrolling in FNY at: <https://flunearyou.org/>