

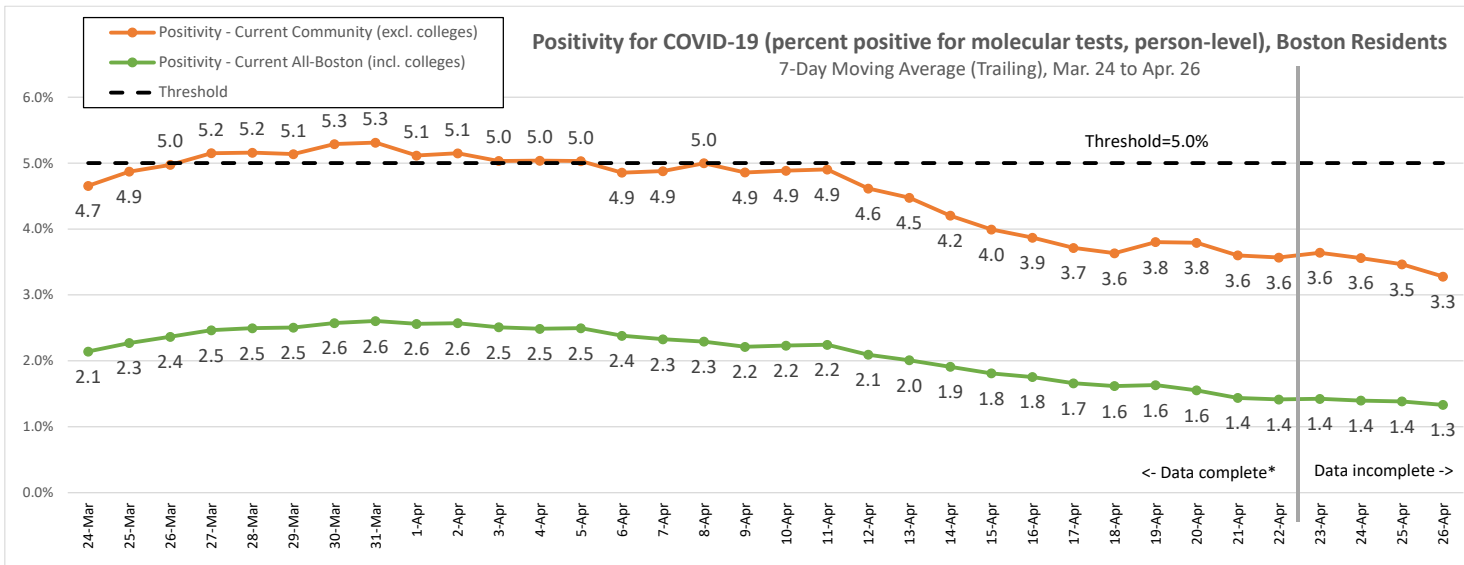
**All-Boston COVID-19
New Positive Tests**
(7-day moving average)

April 22:
114.7 per day
(16.9 per 100K residents)

Number above goal:
+46.8
Goal:
67.9 (10.0 per 100K residents)

Number below threshold:
-225.0
Threshold:
339.7 (50.0 per 100K residents)

Data downloaded Tuesday, April 27, 2021
*Data to the left of vertical line assumed to be 95%-99% complete based on assessment of historical data.



**Current Community
Positivity for COVID-19**
(7-day moving average)

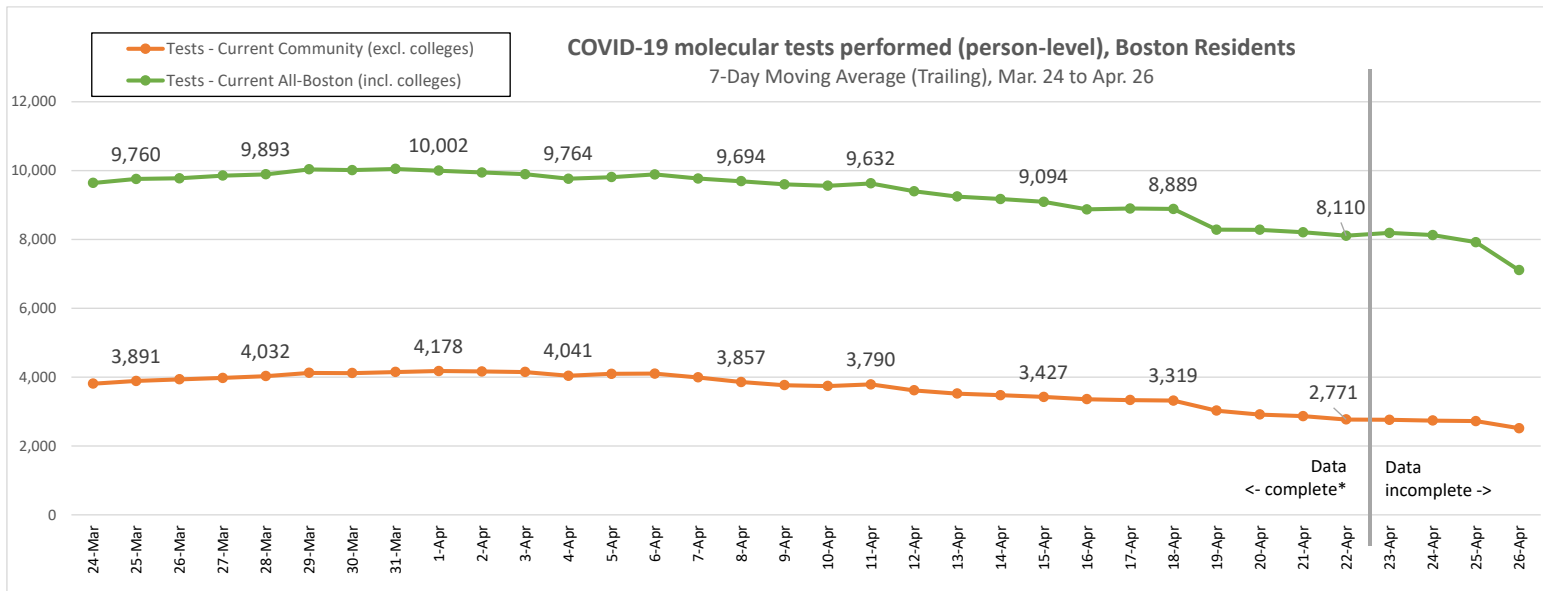
April 22:
3.6%

Percentage points below goal:
-0.4
Goal: 4.0%

Percentage points below threshold:
-1.4
Threshold: 5.0%

Number of Boston neighborhoods with positivity ≥ 8.0%:
0
Threshold: 4 NHDs with positivity ≥ 8.0%

Data downloaded Tuesday, April 27, 2021. As of January 1, 2021, the line for cumulative positivity is no longer being presented as the current positivity lines provide the most appropriate person-level testing information for assessing positivity trends over time. The cumulative positivity measure is most appropriately applied for a single-point-in-time calculation of total person-level positivity from the start of the pandemic. For more information, please contact the Boston Public Health Commission Research and Evaluation Office (research@bphc.org).
*Data to the left of vertical line assumed to be 95%-99% complete based on assessment of historical data.



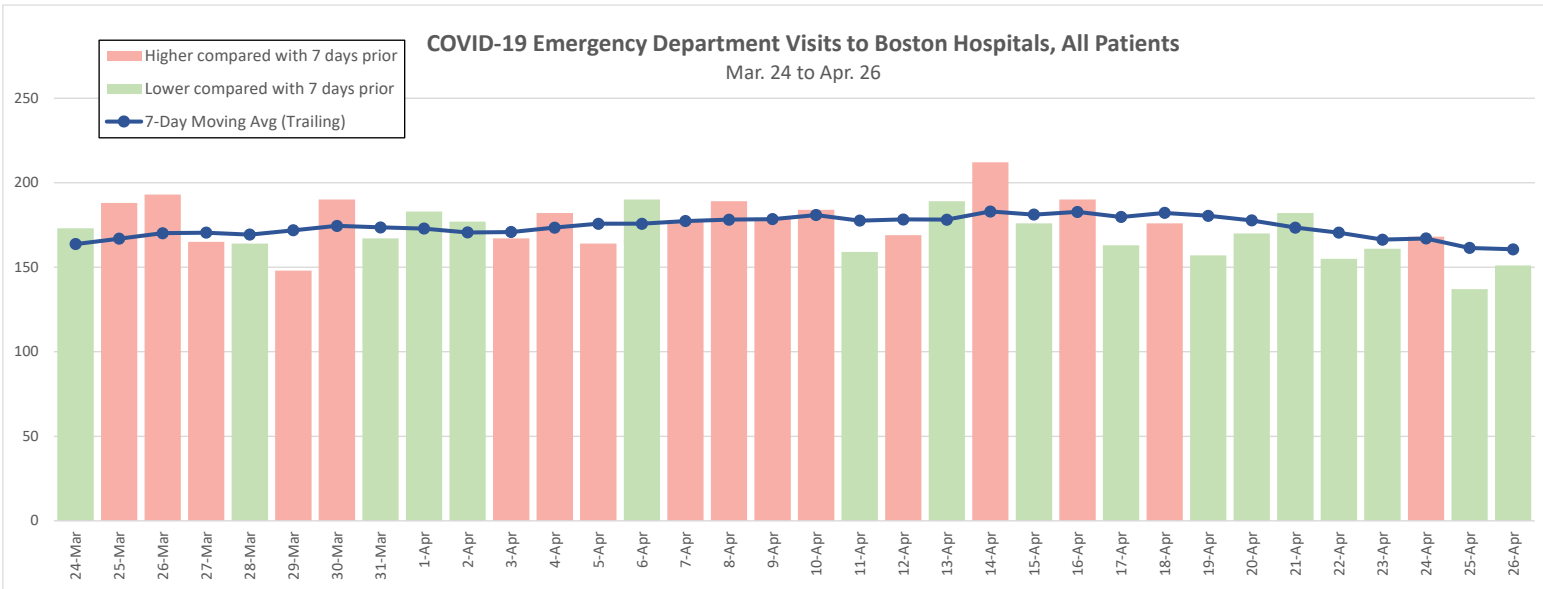
**Current Community
COVID-19 Molecular Tests
Performed**

**April 22:
2,771 per day**
(7-day moving average)

**Number of consecutive
weeks with decrease:
3 (as of Apr. 22)**
Threshold: Decreasing for 3 or more
consecutive weeks

Data downloaded Tuesday, April 27, 2021. As of January 1, 2021, the line for tests based on the cumulative algorithm is no longer being presented as the current algorithm lines provide the most appropriate person-level testing information for assessing testing trends over time. The cumulative algorithm is most appropriately applied for a single-point-in-time calculation of total person-level testing from the start of the pandemic. For more information, please contact the Boston Public Health Commission Research and Evaluation Office (research@bphc.org).

*Data to the left of vertical line assumed to be 95%-99% complete based on assessment of historical data.



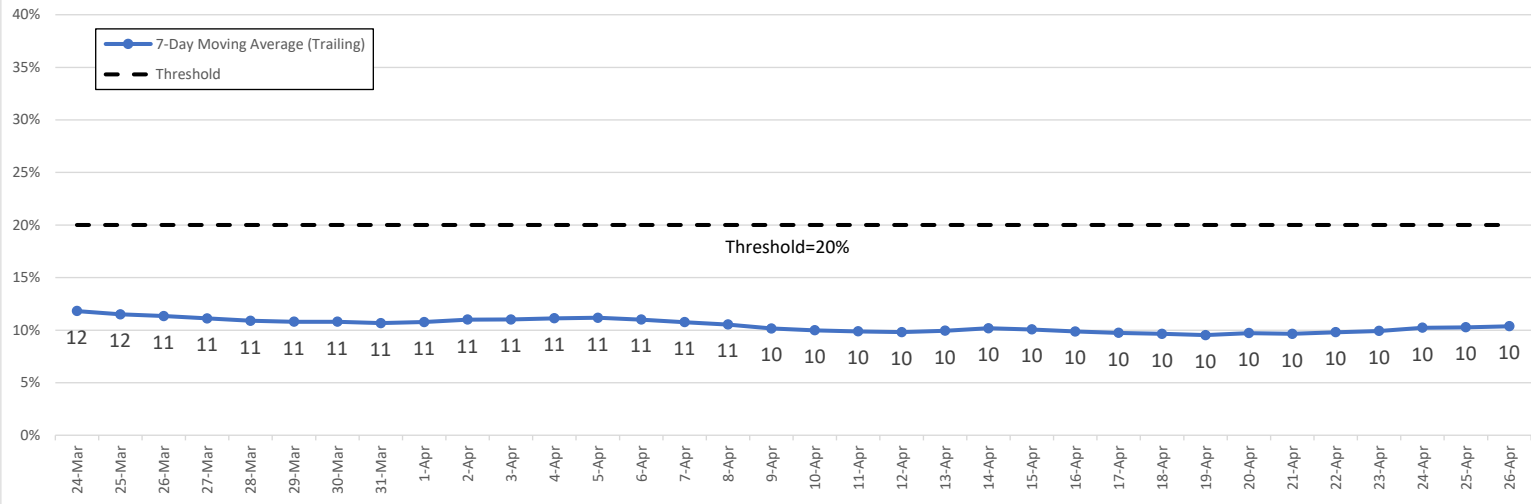
COVID-19 ED visits

**April 26:
160.6 ED visits**
(7-day moving average)

**Number of consecutive
days higher than same
day of previous week:
0 (as of Apr. 26)**
Threshold: 7 consecutive days
higher than same day of
previous week (i.e., red bars)

Percentage of Available Adult ICU and Adult Medical/Surgical Beds at Boston Hospitals, All Patients

7-day Moving Average (Trailing), Mar. 24 to Apr. 26



Percentage of Available Adult ICU and Adult Medical/Surgical Beds

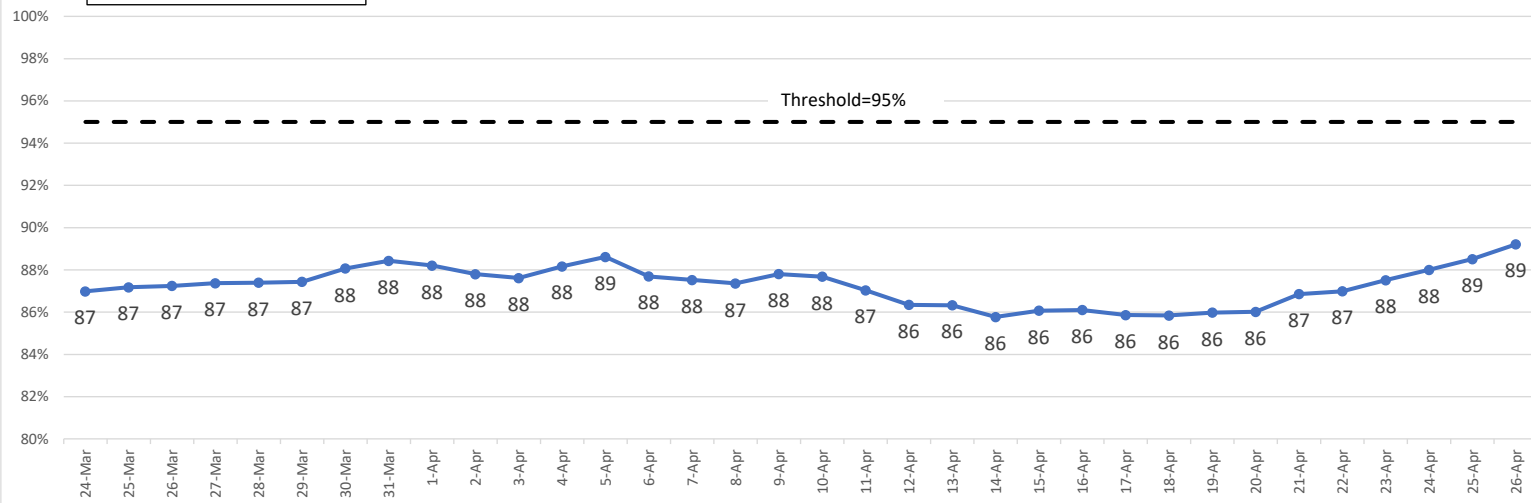
**April 26:
10%**

**Number of consecutive days moving average below threshold (20%):
137 (as of Apr. 26)**

Threshold: 5 consecutive days below 20%

Percentage of Occupied Adult Non-Surge ICU Beds* at Boston Hospitals, All Patients

7-day Moving Average (Trailing), Mar. 24 to Apr. 26



Percentage of Occupied Adult Non-Surge ICU Beds

**April 26:
89%**

**Number of consecutive days moving average above threshold (95%):
0 (as of Apr. 26)**

Threshold: 5 consecutive days above 95%

* Includes staffed adult ICU beds. Does not include staffed surge ICU beds or unstaffed surge ICU beds. Assumes that all ICU beds are used before any surge ICU bed.