

**COVID-19 New Positive Tests**  
(7-day moving average)

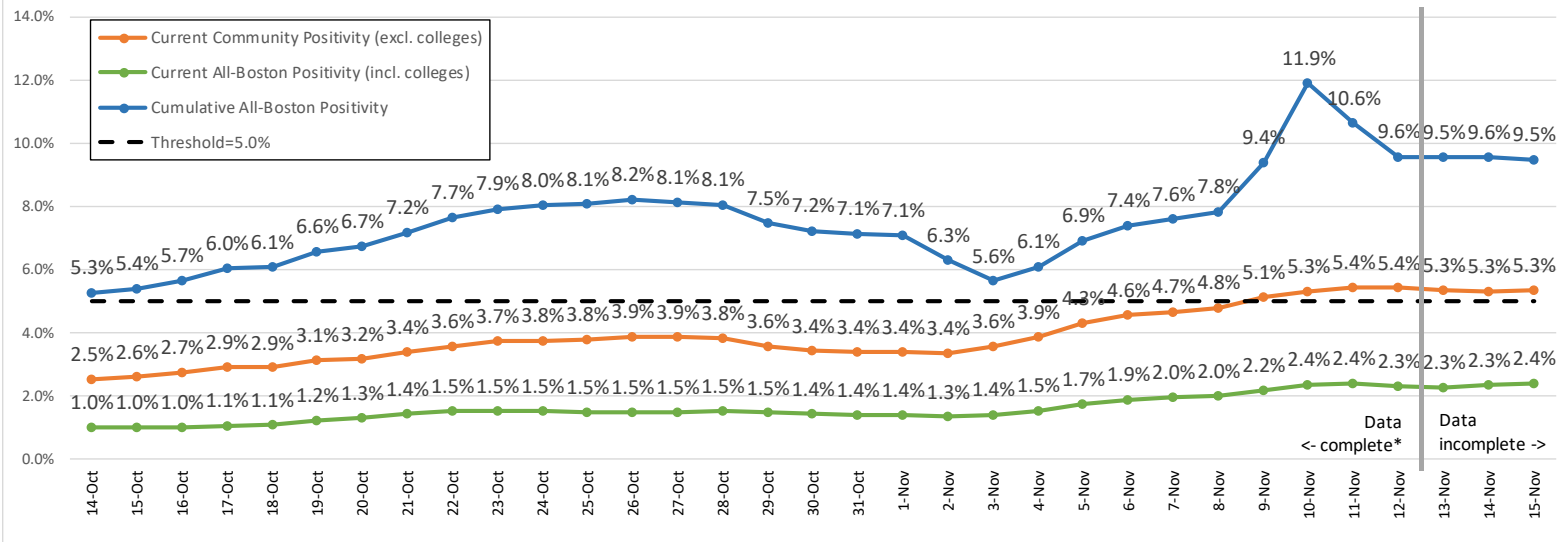
**November 12:**  
**225.3 per day**  
(33.2 per 100K residents)

**Number above goal:**  
**157.4**  
Goal: 67.9

**Number below threshold:**  
**114.3**  
Threshold: 339.7  
(50.0 per 100K residents)

Data downloaded November 16, 2020  
\*Data to the left of vertical line assumed to be 95%-99% complete based on assessment of historical data.

**Positivity for COVID-19 (percent positive for molecular tests, person-level), Boston Residents**  
7-Day Moving Average (Trailing), Oct. 14 to Nov. 15



Data downloaded November 16, 2020

\*Data to the left of vertical line assumed to be 95%-99% complete based on assessment of historical data.

**Current Community Positivity for COVID-19**  
(7-day moving average)

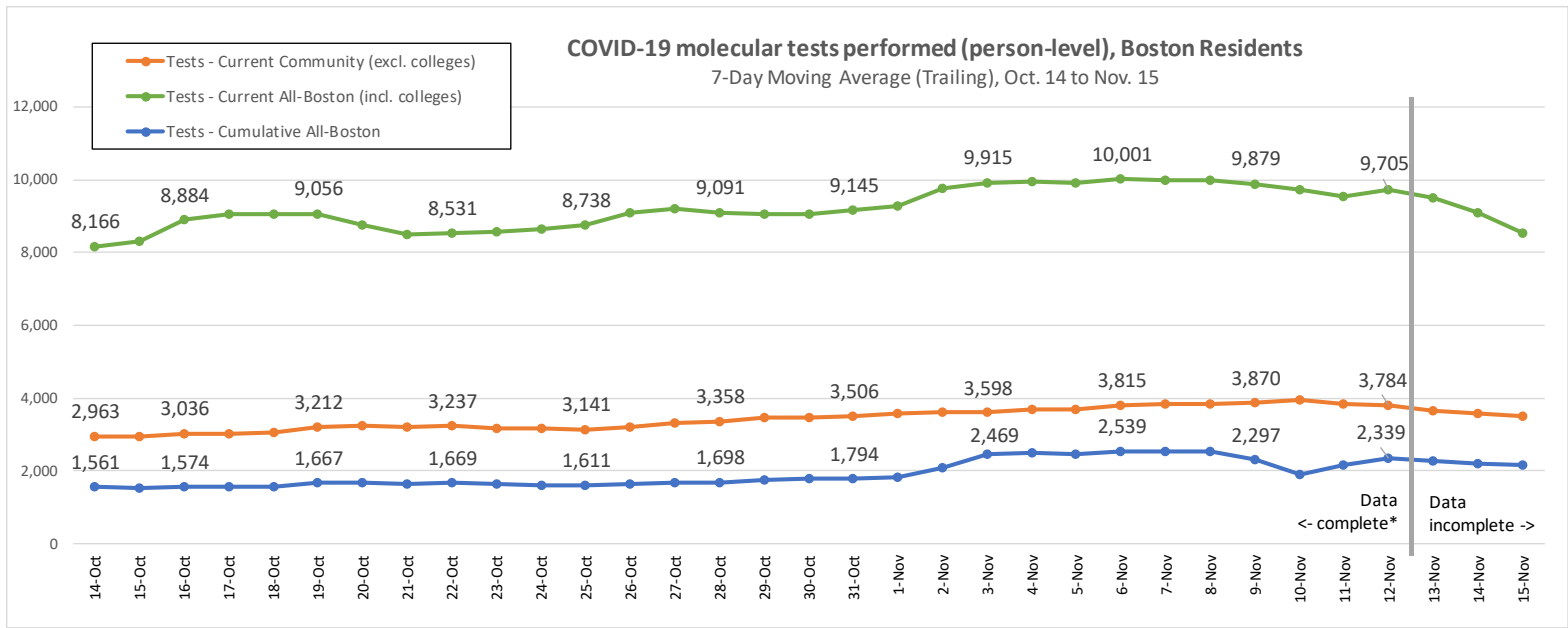
**November 12:**  
**5.4%**

**Percentage points above goal:**  
**1.4**  
Goal: 4.0%

**Percentage points above threshold:**  
**0.4**  
Threshold: 5.0%

**Number of Boston neighborhoods ≥ 8.0%:**  
**1**

Threshold: 4 NHDs ≥ 8.0%



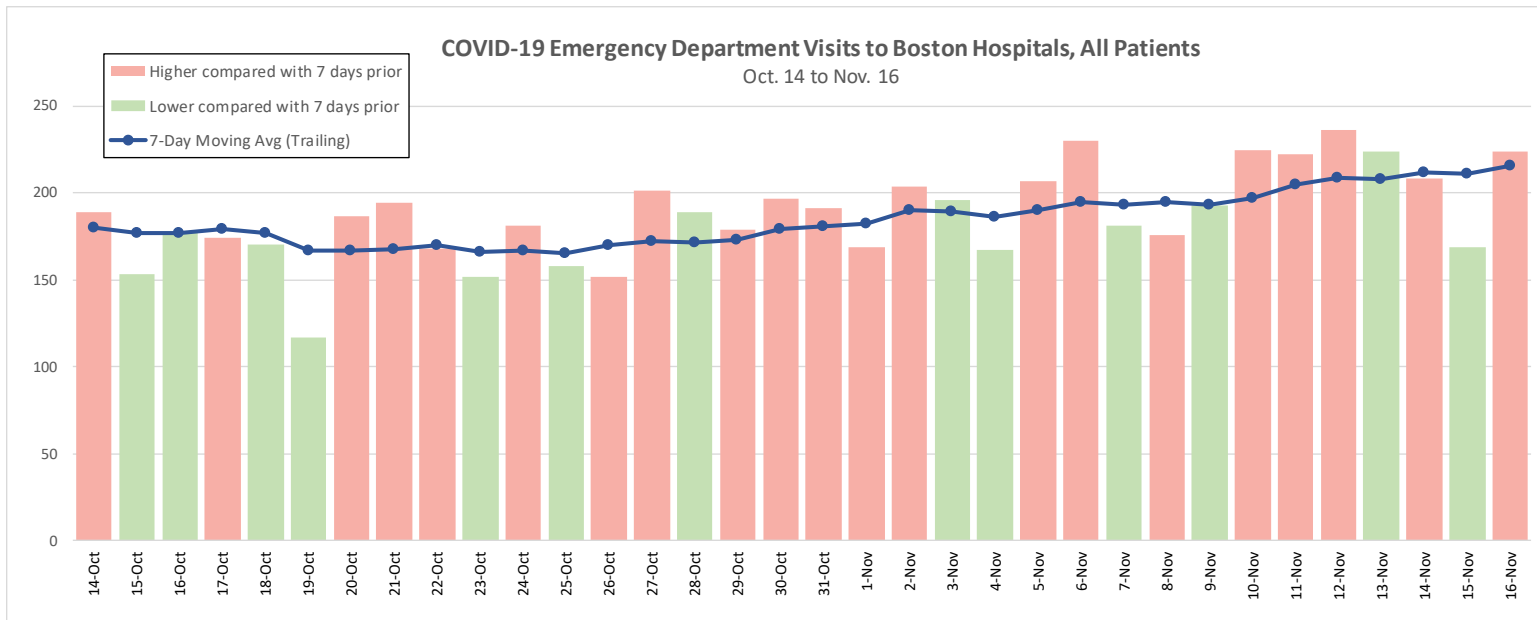
**COVID-19 Current  
Community Molecular  
Tests Performed**

**November 12:  
3,784 per day**  
(7-day moving average)

**Number of consecutive  
weeks with decrease: 0**  
(As of November 12)

Threshold: Decreasing for three  
or more consecutive weeks

Data downloaded November 16, 2020  
 \*Data to the left of vertical line assumed to be 95%-99% complete based on assessment of historical data.

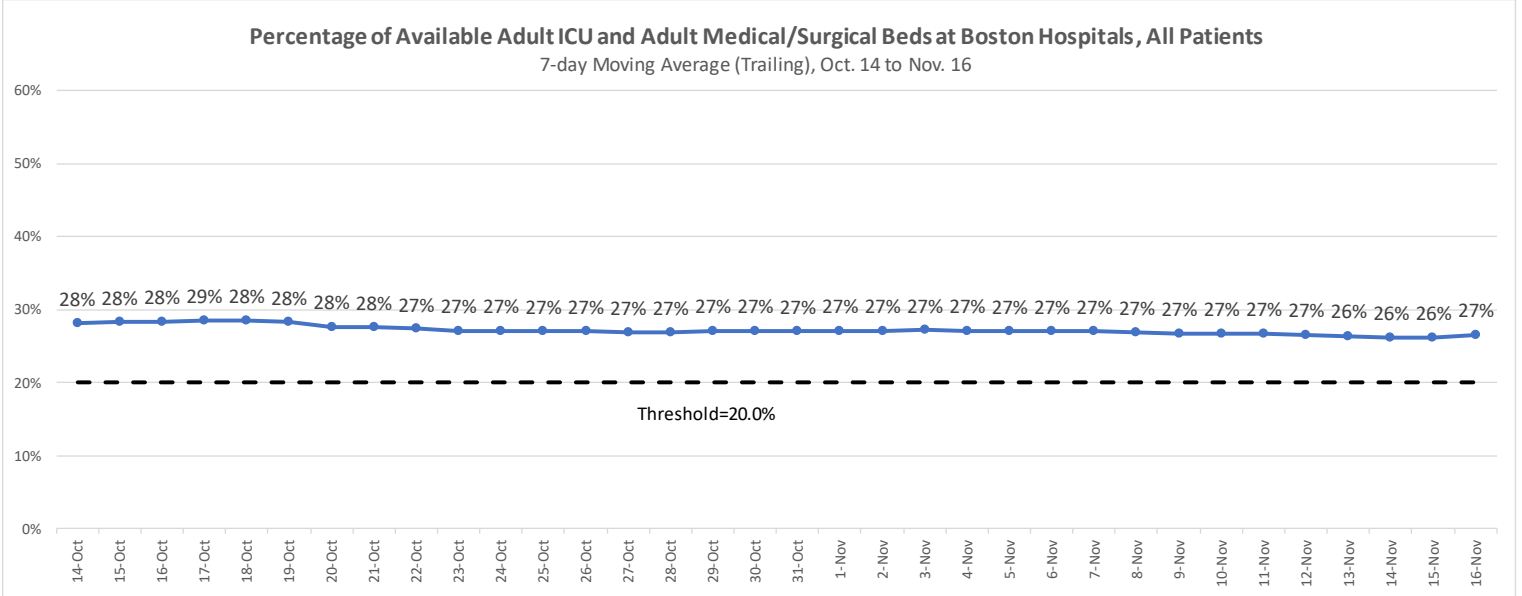


**COVID-19 ED visits**

**November 16:**  
**215.4 ED visits**  
 (7-day moving average)

**Number of consecutive days higher than same day of previous week:**  
**1**  
 (As of November 16)

Threshold: 7 consecutive days of increase as compared to same day the previous week



**Percentage of Available Adult ICU and Adult Medical/Surgical Beds**

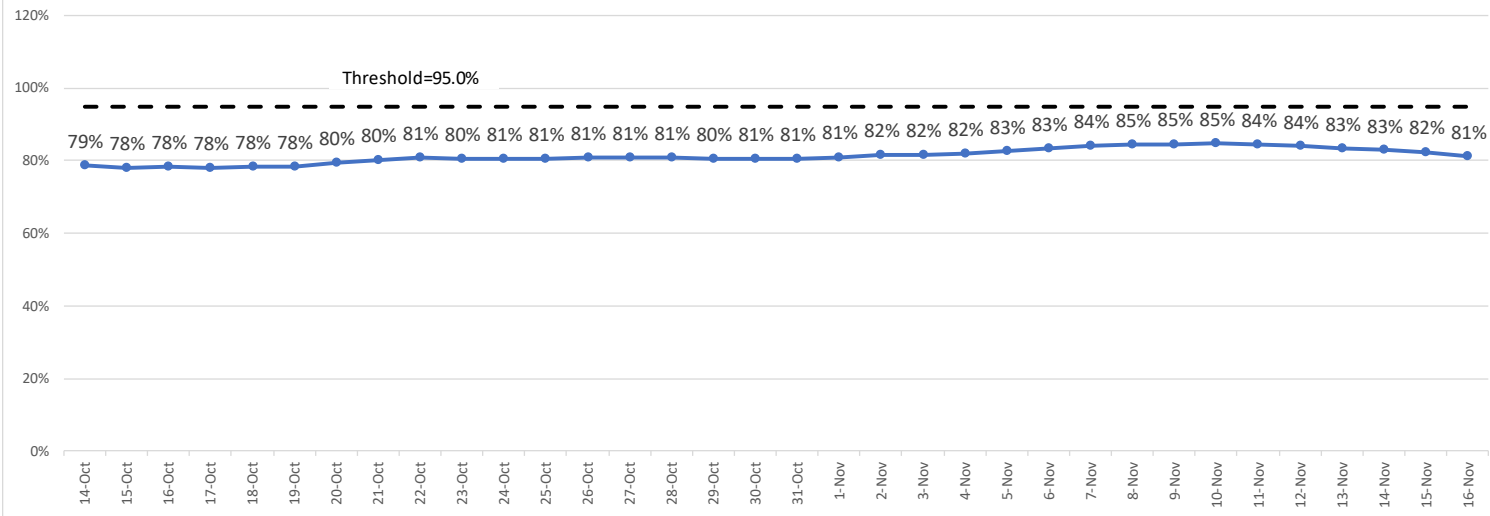
**November 16:  
27%**

**Number of days moving average below 20%:  
0**

Threshold: Five consecutive days below 20% of Beds Available

**Percentage of Occupied Adult Non-Surge ICU Beds\* at Boston Hospitals, All Patients**

7-day Moving Average (Trailing), Oct. 14 to Nov. 16



**Percentage of Non-Surge Adult ICU Beds Occupied**

**November 16:  
81%**

**Days above 95%:  
0**

Threshold: Five consecutive days  
95% or more occupied adult non-  
surge ICU beds

\* Includes staffed adult ICU beds. Does not include staffed surge ICU beds or unstaffed surge ICU beds. Assumes that all ICU beds are used before any surge ICU bed.