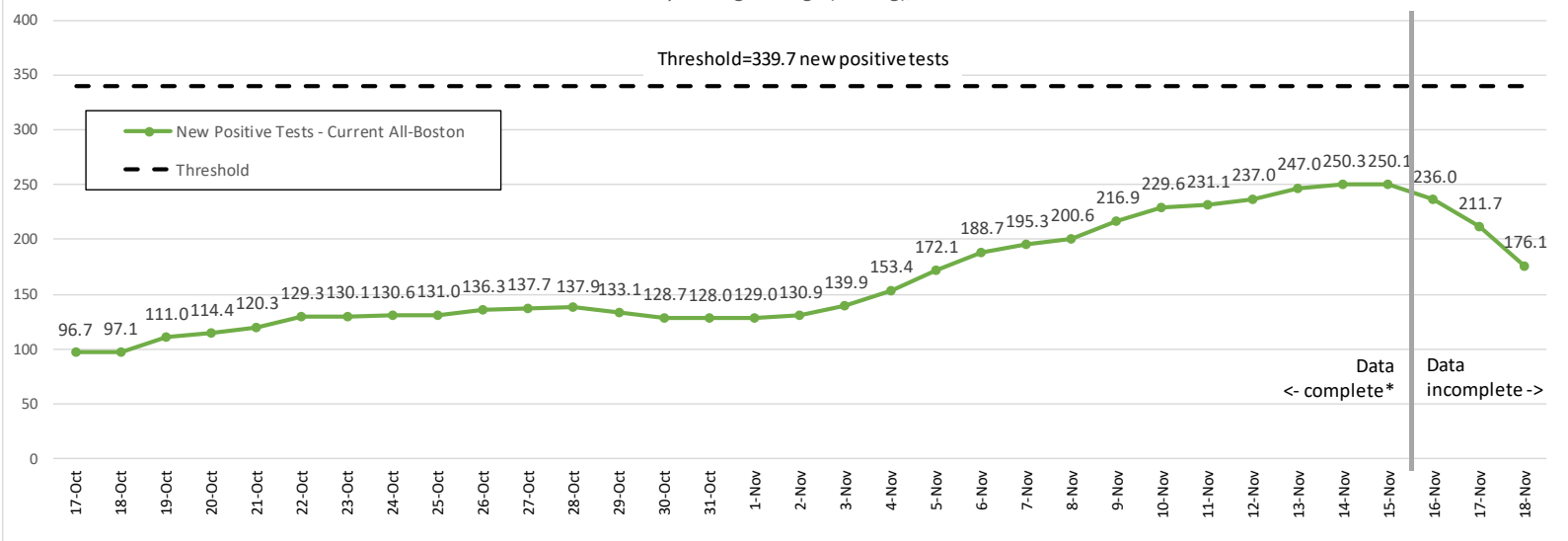


New Positive Tests for COVID-19 (molecular tests, person-current-level), Boston Residents

7-Day Moving Average (Trailing), Oct. 17 to Nov. 18



All-Boston COVID-19
New Positive Tests
 (7-day moving average)

November 15:
250.1 per day
(36.8 per 100K residents)

Number above goal:
182.2
 Goal:
 67.9

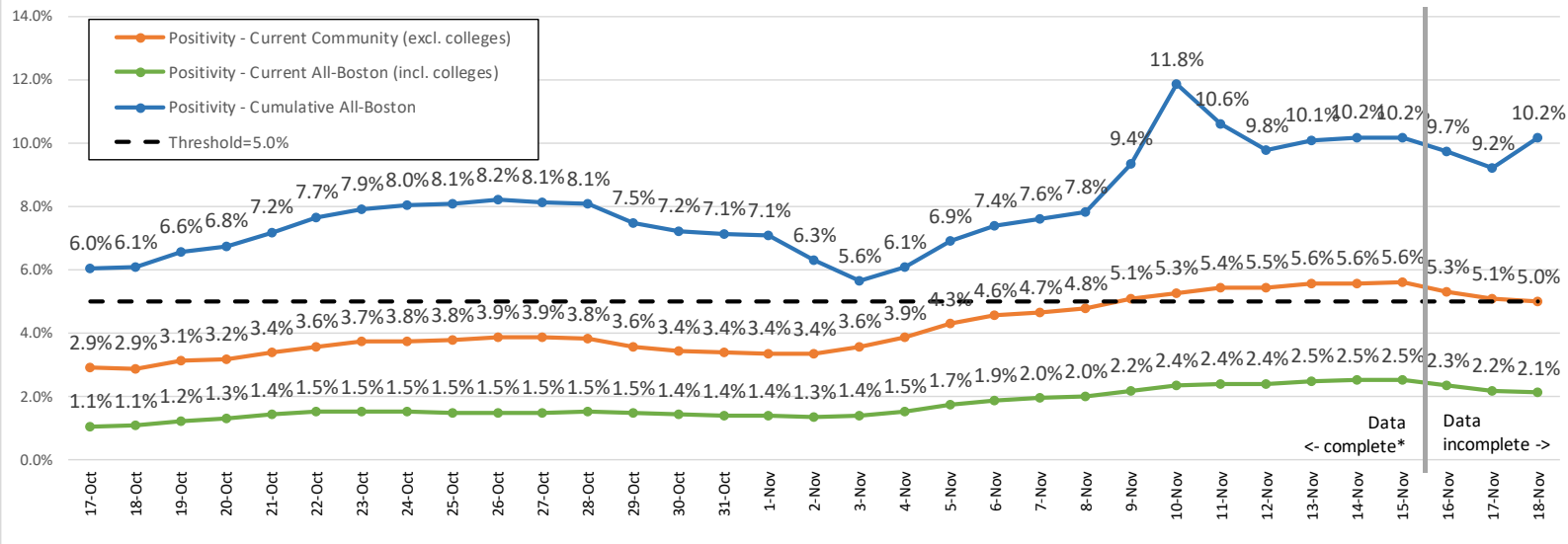
Number below
threshold: 89.6
 Threshold:
 339.7 (50.0 per 100K residents)

Data downloaded November 19, 2020

*Data to the left of vertical line assumed to be 95%-99% complete based on assessment of historical data.

Positivity for COVID-19 (percent positive for molecular tests, person-level), Boston Residents

7-Day Moving Average (Trailing), Oct. 17 to Nov. 18



Data downloaded November 19, 2020

*Data to the left of vertical line assumed to be 95%-99% complete based on assessment of historical data.

Current Community Positivity for COVID-19

(7-day moving average)

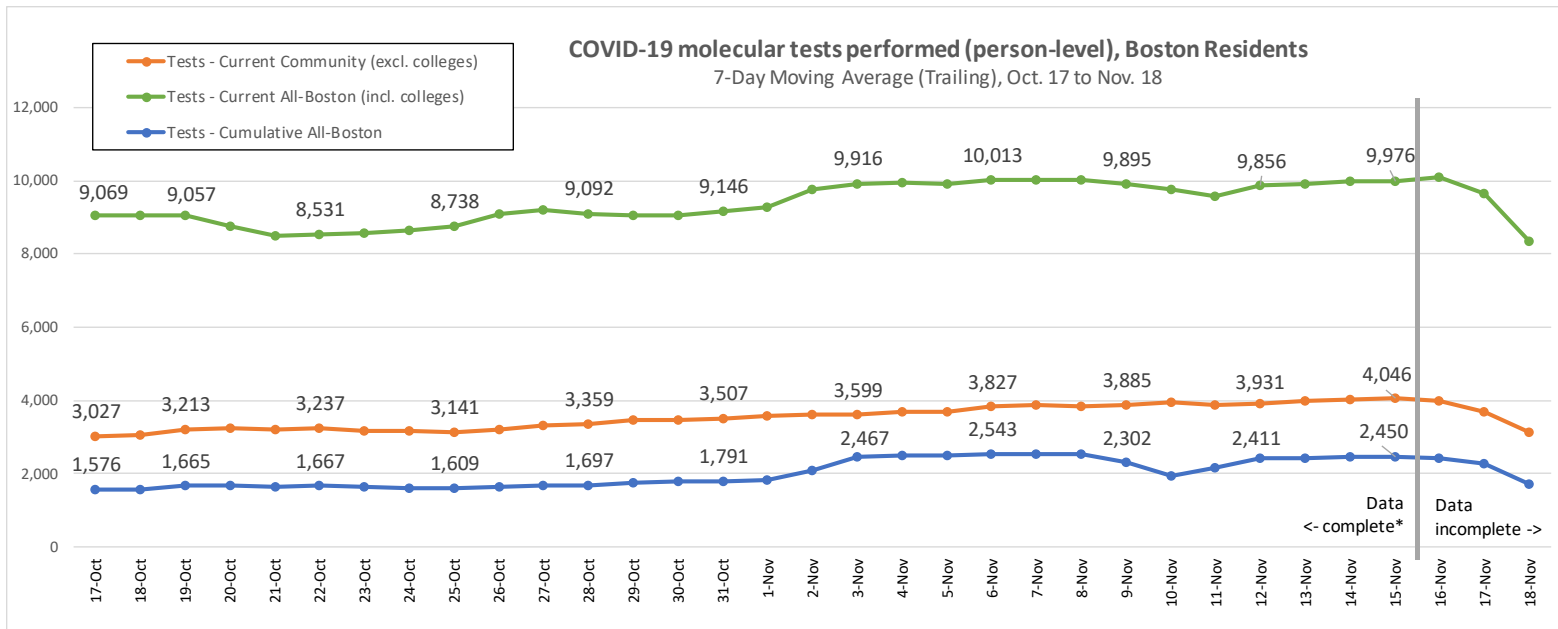
November 15:
5.6%

Percentage points above goal:
1.6
Goal: 4.0%

Percentage points above threshold:
0.6
Threshold: 5.0%

Number of Boston neighborhoods with positivity ≥ 8.0%:
2

Threshold: 4 NHDs with positivity ≥ 8.0%

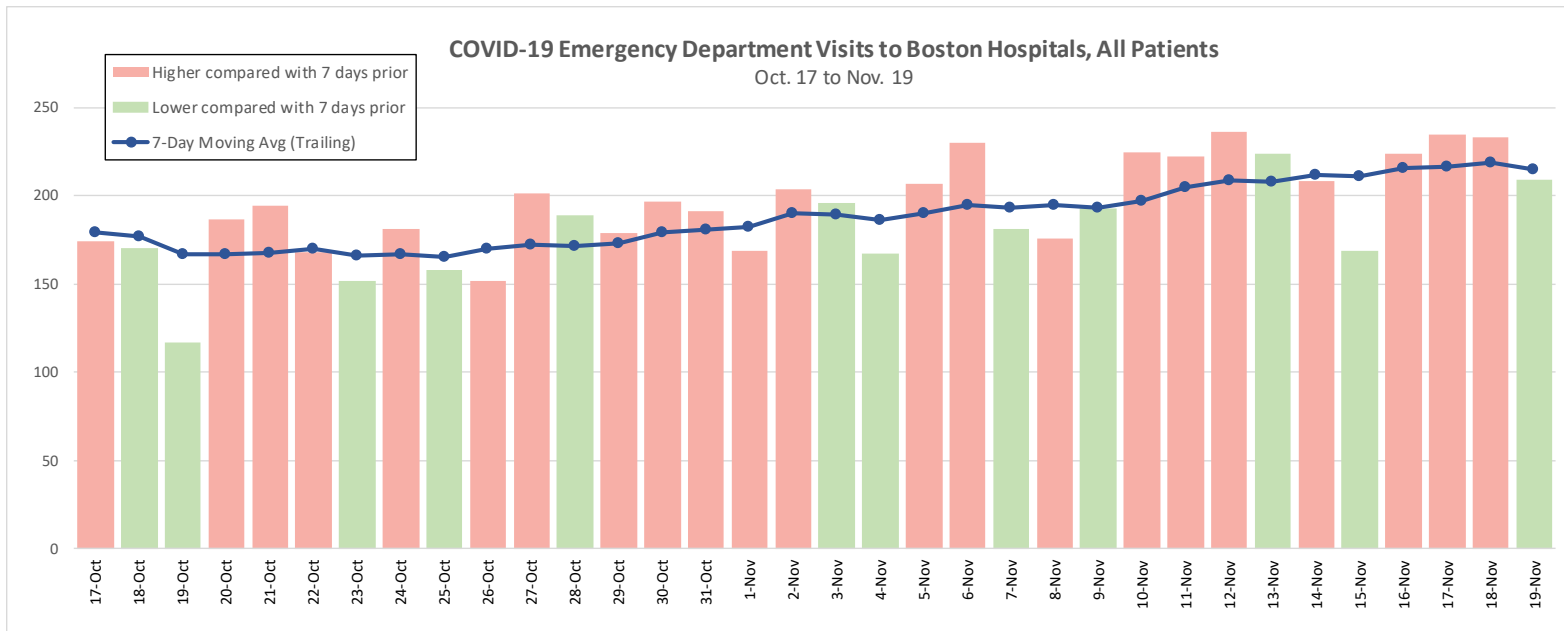


**Current Community
COVID-19 Molecular Tests
Performed**

**November 15:
4,046 per day**
(7-day moving average)

**Number of consecutive
weeks with decrease:
0 (as of Nov. 15)**
Threshold: Decreasing for 3 or
more consecutive weeks

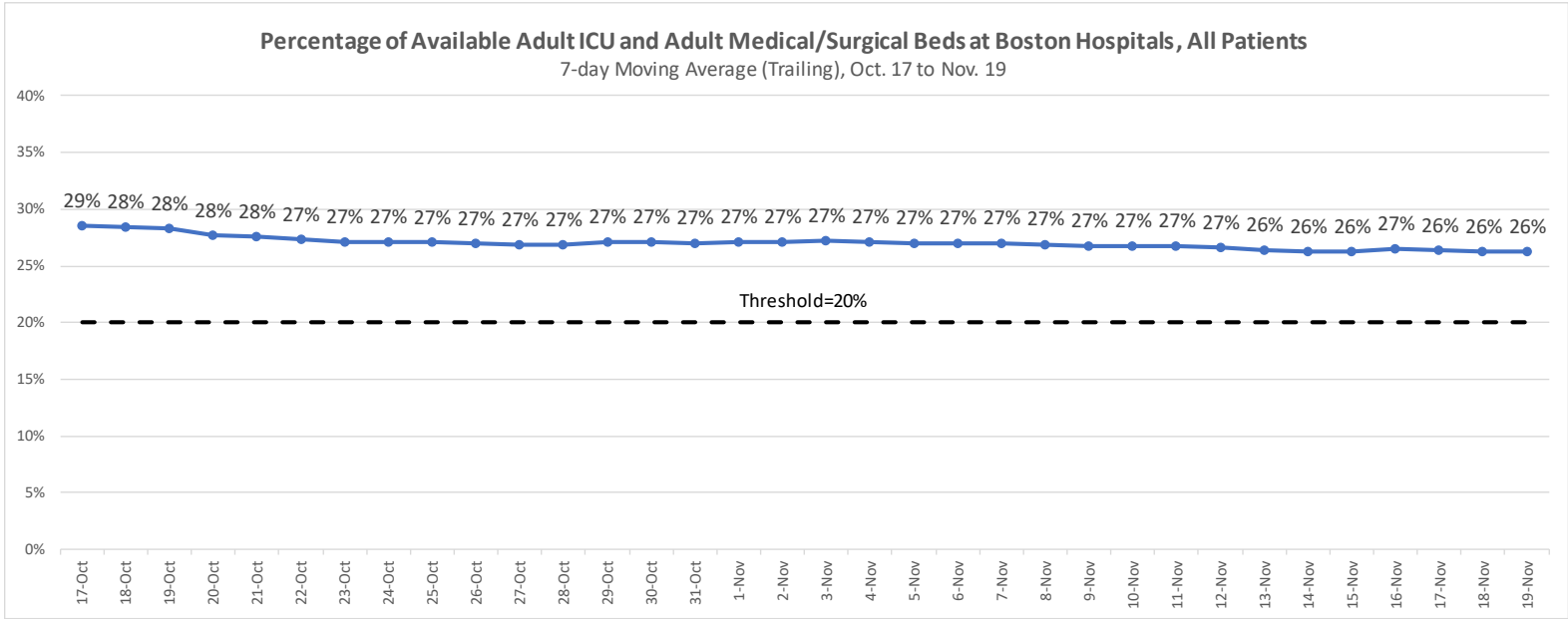
Data downloaded November 19, 2020
*Data to the left of vertical line assumed to be 95%-99% complete based on assessment of historical data.



COVID-19 ED visits

November 19:
214.6 ED visits
 (7-day moving average)

Number of consecutive days higher than same day of previous week:
0 (as of Nov. 19)
 Threshold: 7 consecutive days higher than same day of previous week (i.e., red bars)

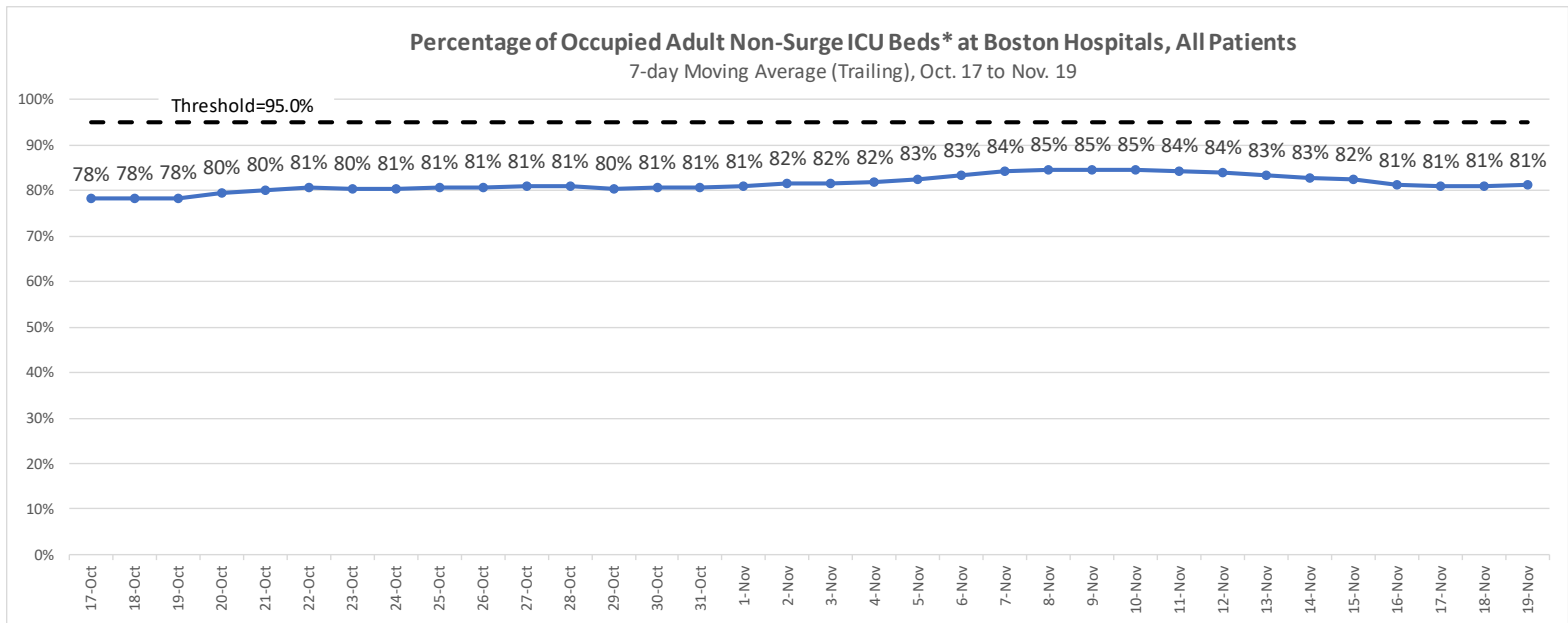


Percentage of Available Adult ICU and Adult Medical/Surgical Beds

**November 19:
26%**

**Number of consecutive days moving average below threshold (20%):
0 (as of Nov. 19)**

Threshold: 5 consecutive days below 20%



Percentage of Occupied Adult Non-Surge ICU Beds

**November 19:
81%**

**Number of consecutive days moving average above threshold (95%):
0 (as of Nov. 19)**

Threshold: 5 consecutive days above 95%

* Includes staffed adult ICU beds. Does not include staffed surge ICU beds or unstaffed surge ICU beds. Assumes that all ICU beds are used before any surge ICU bed.